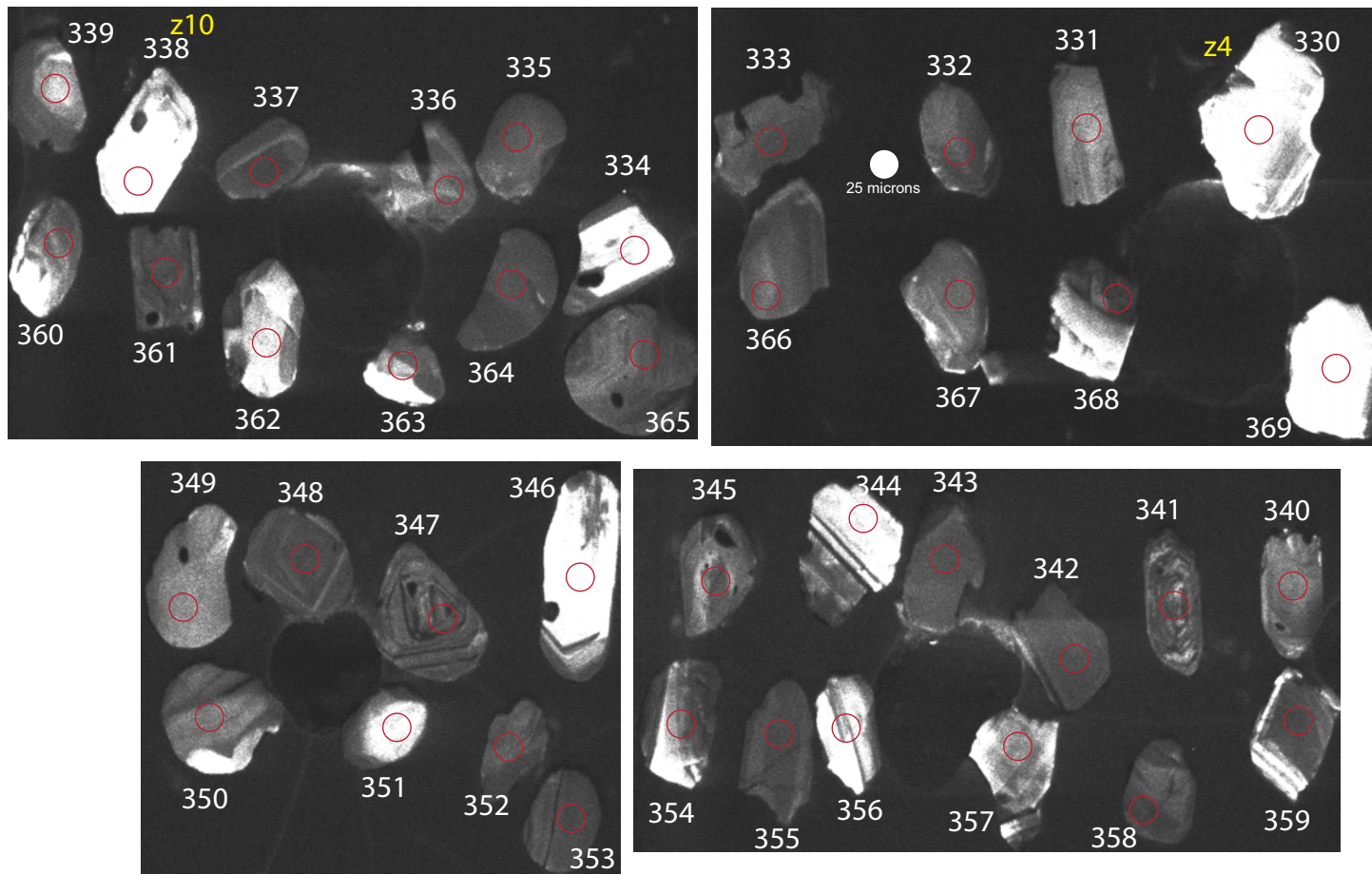


Appendix A

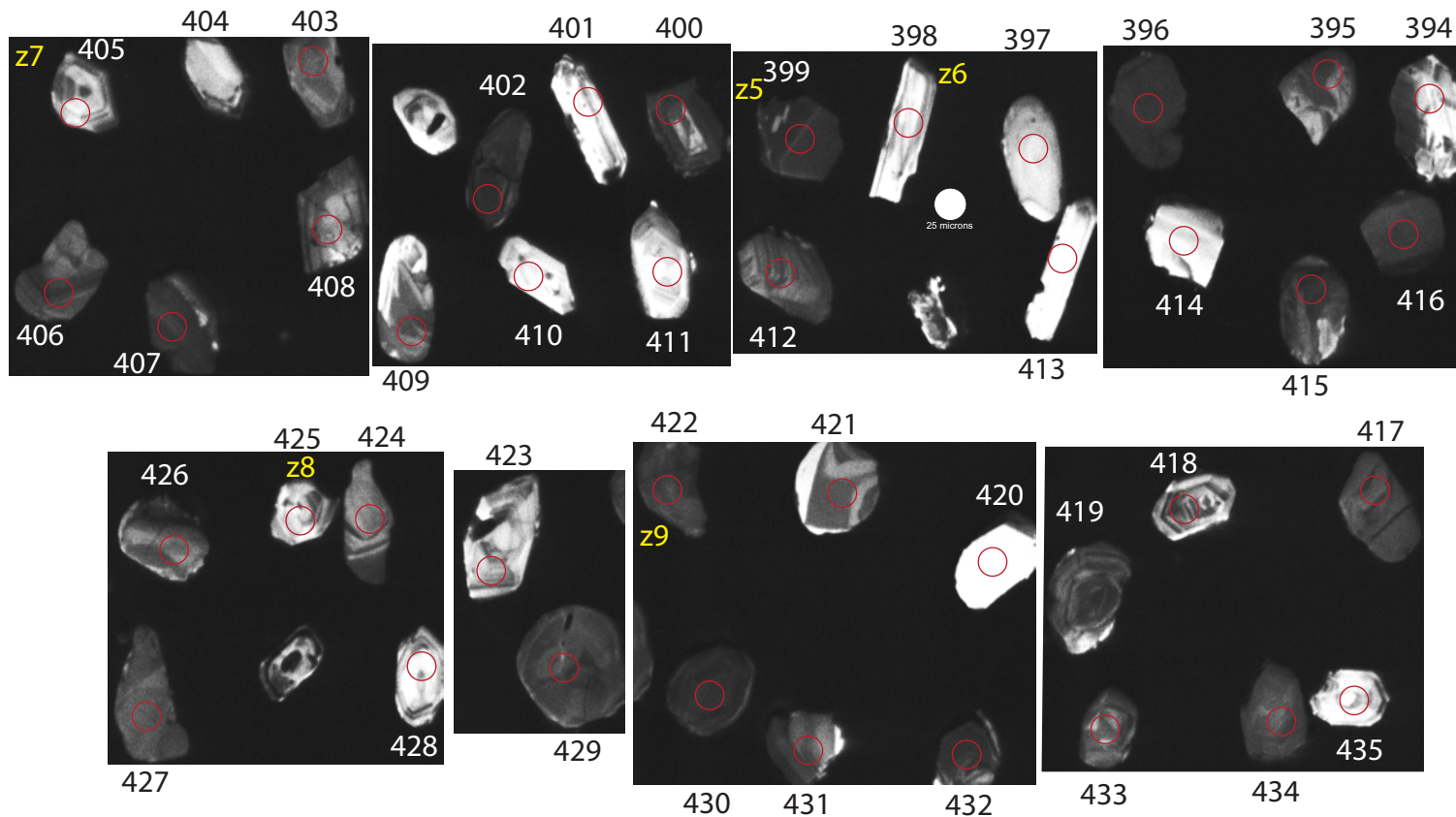
Figure A1

Cathodoluminescence images of zircon for
samples analyzed in this study

11MC059 M mount



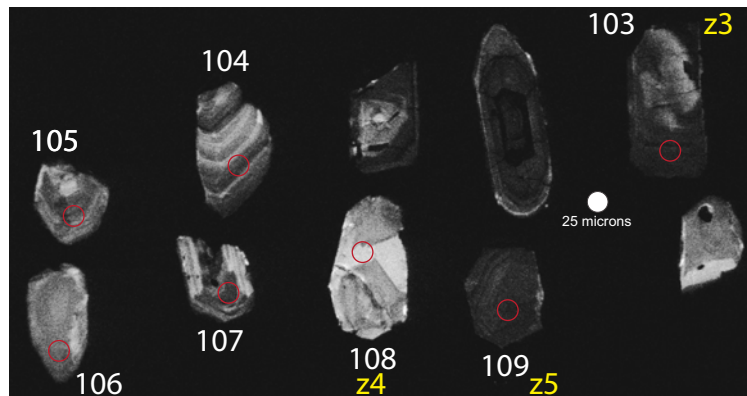
11MC059 S mount



12MC162

M sharp YGS

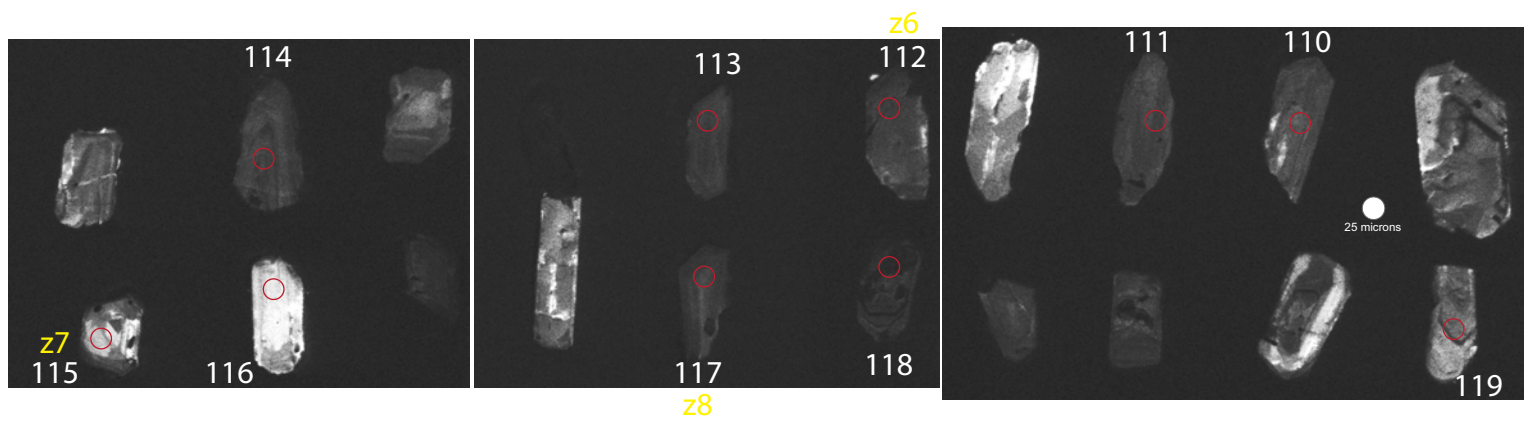
September 16, 2016 in Miscellaneous Mount in YGS Drawer



12MC162

S sharp YGS

September 16, 2016 in Miscellaneous Mount in YGS Drawer



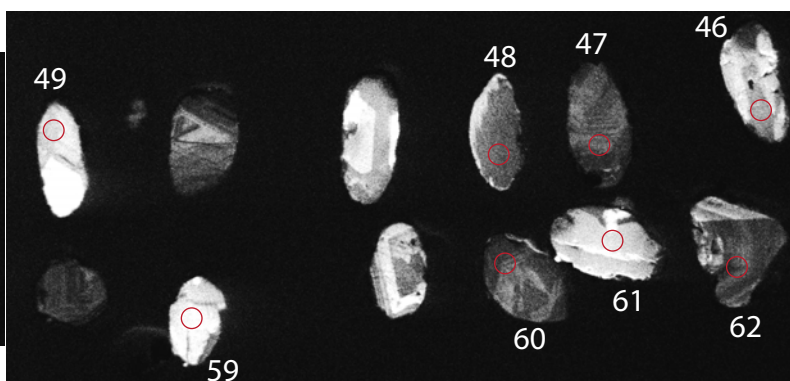
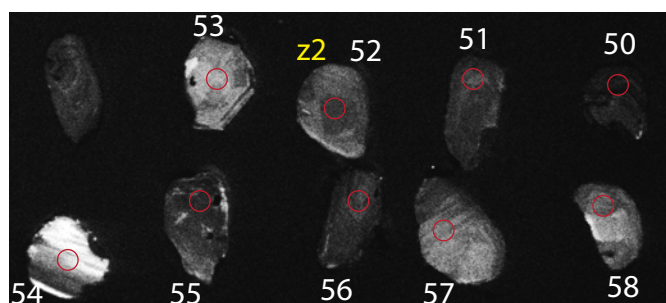
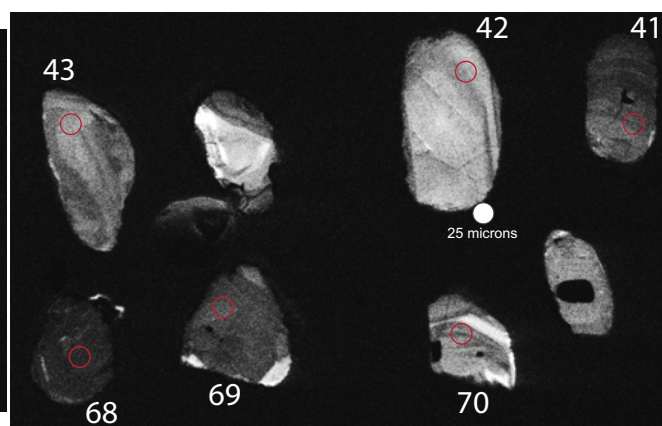
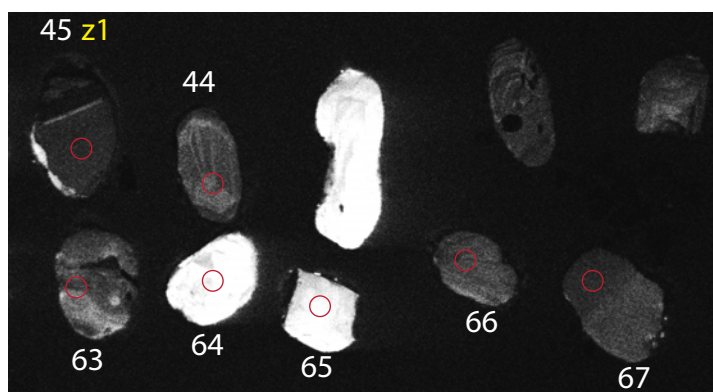
12MC162

M

round

YGS

September 16, 2016 in Miscellaneous Mount in YGS Drawer



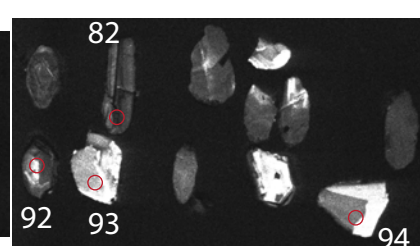
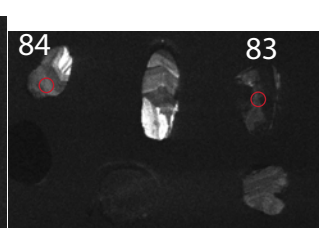
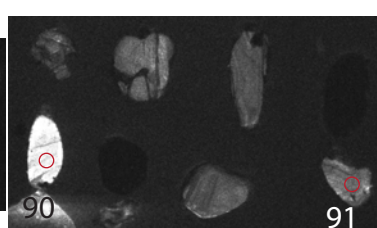
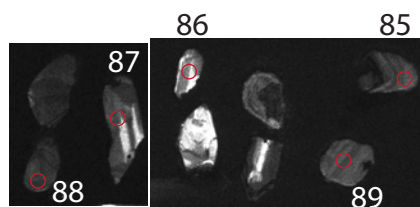
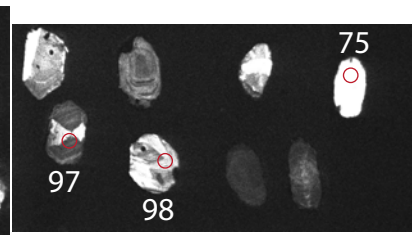
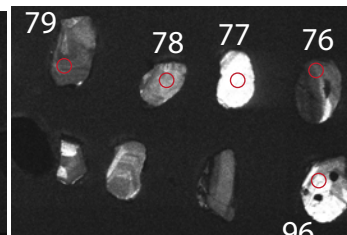
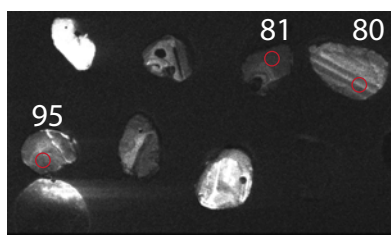
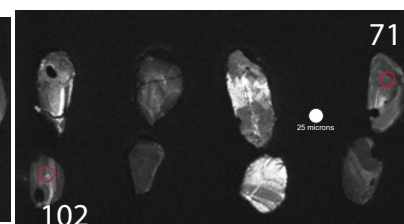
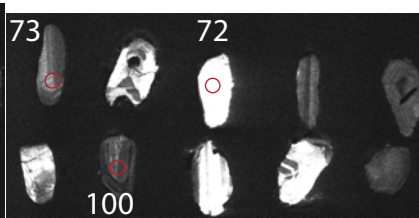
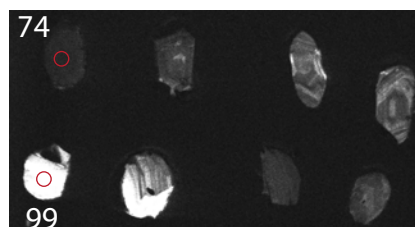
12MC162

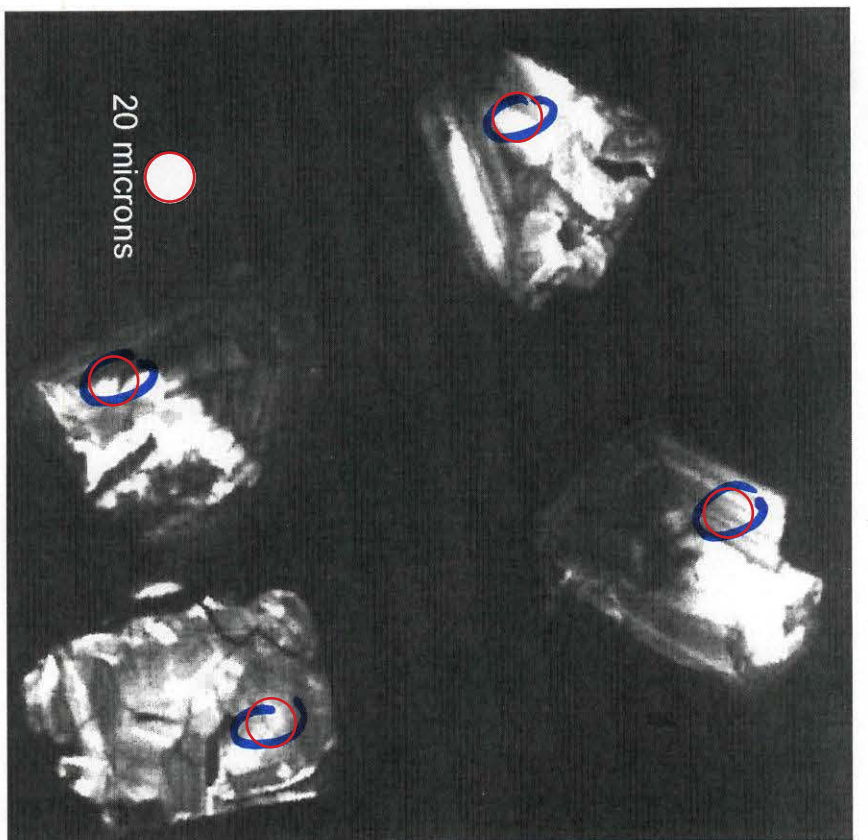
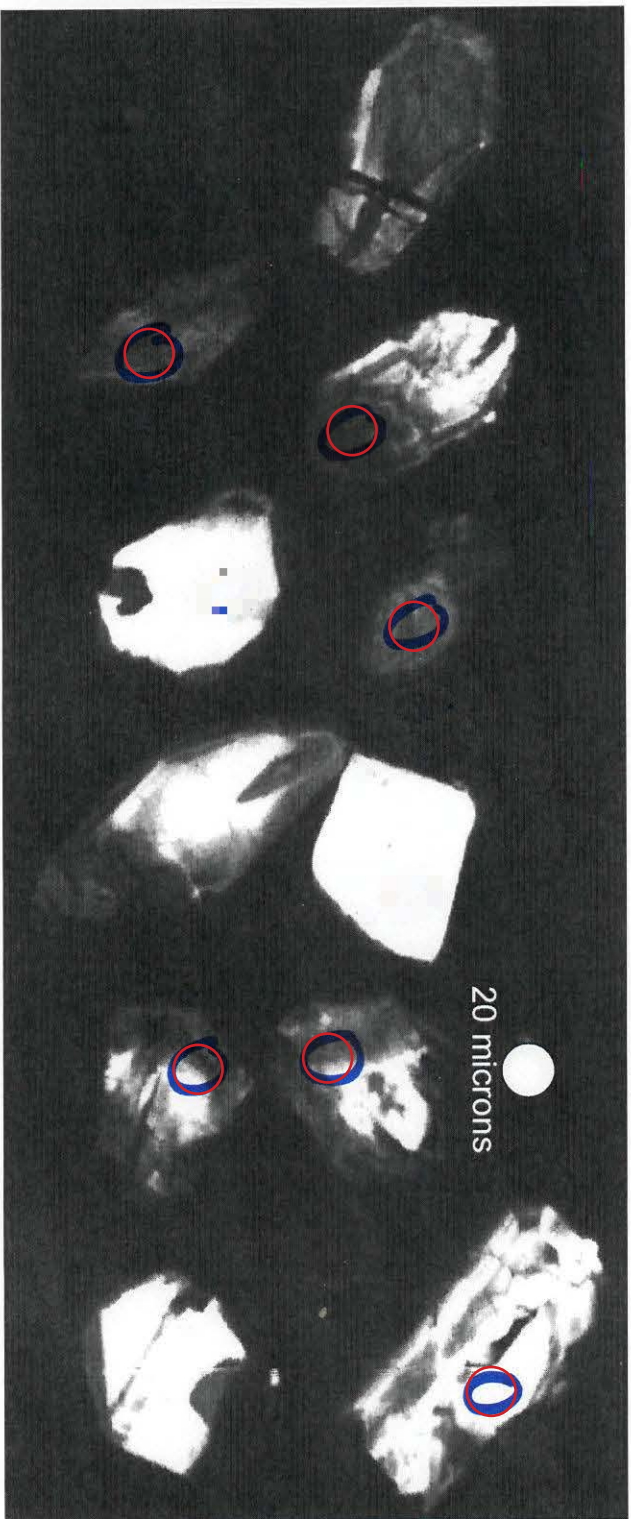
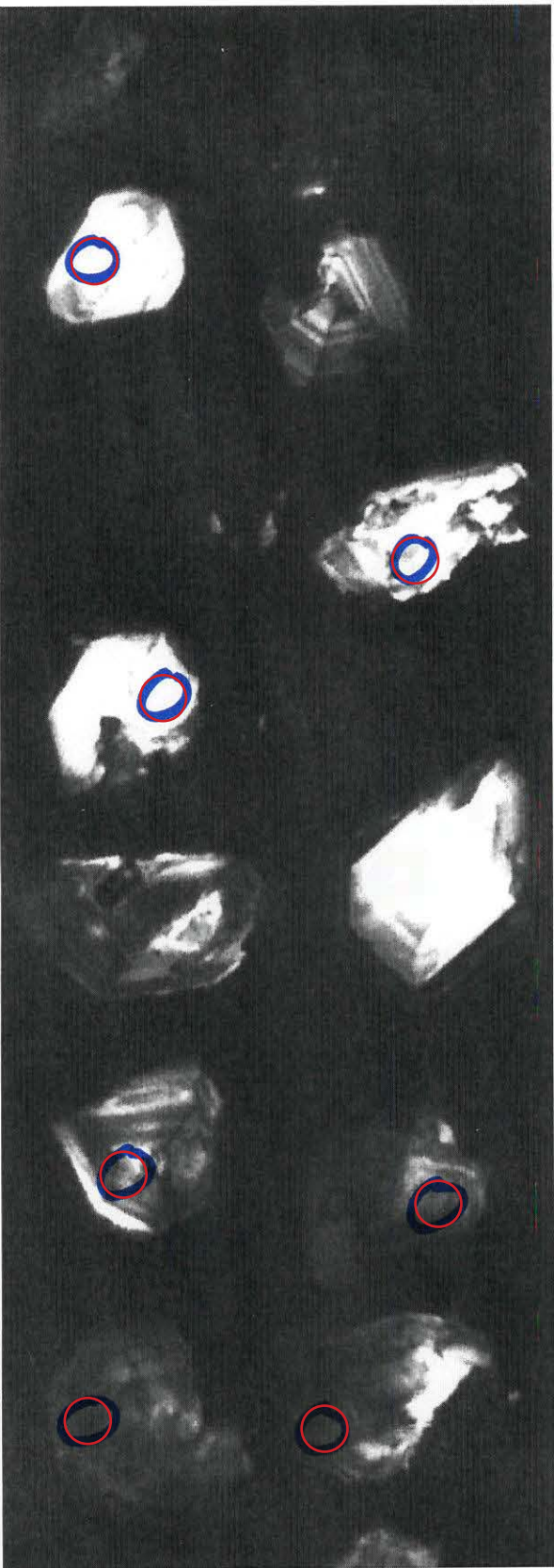
S

round

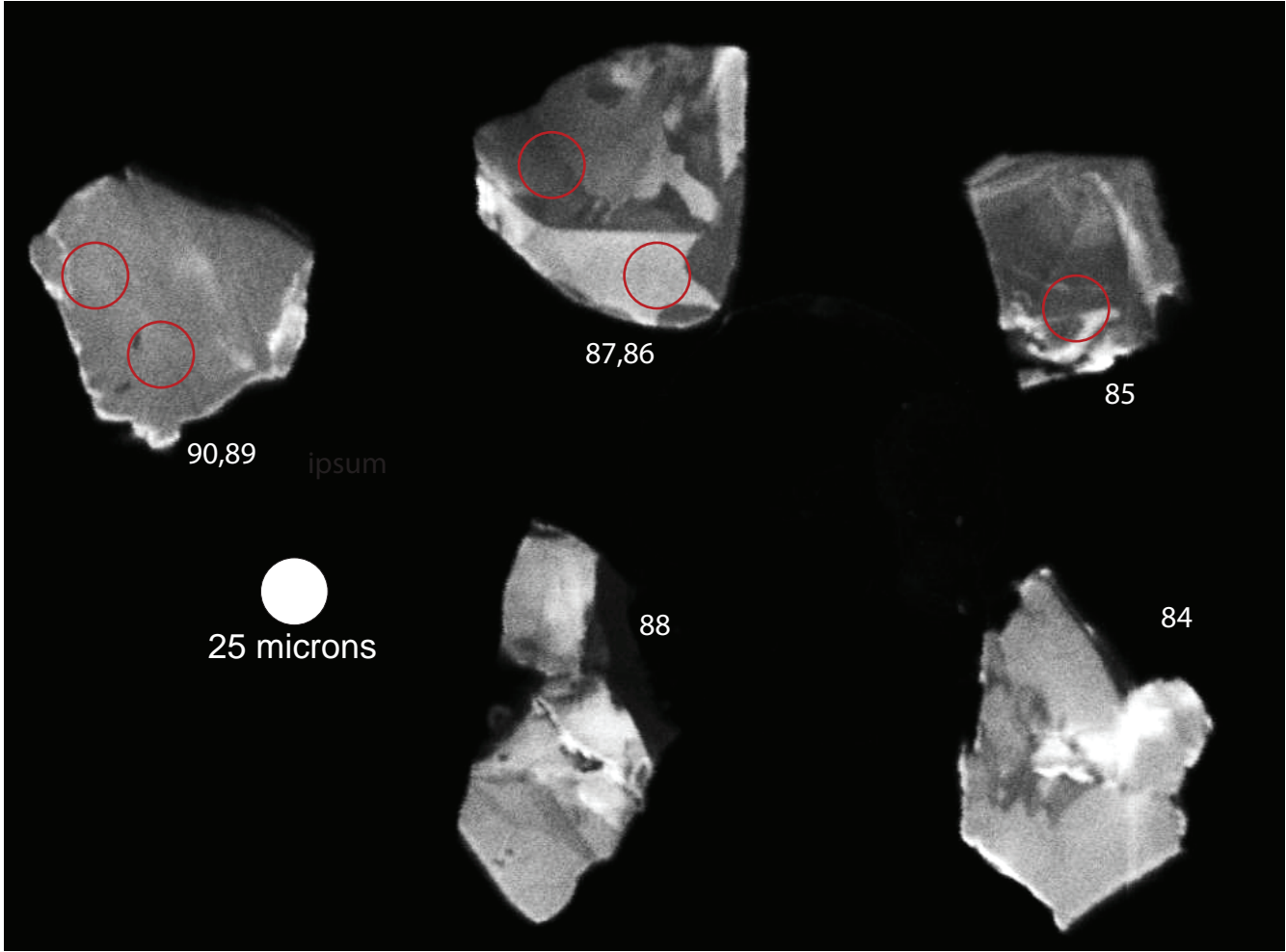
YGS

September 16, 2016 in Miscellaneous Mount in YGS Drawer

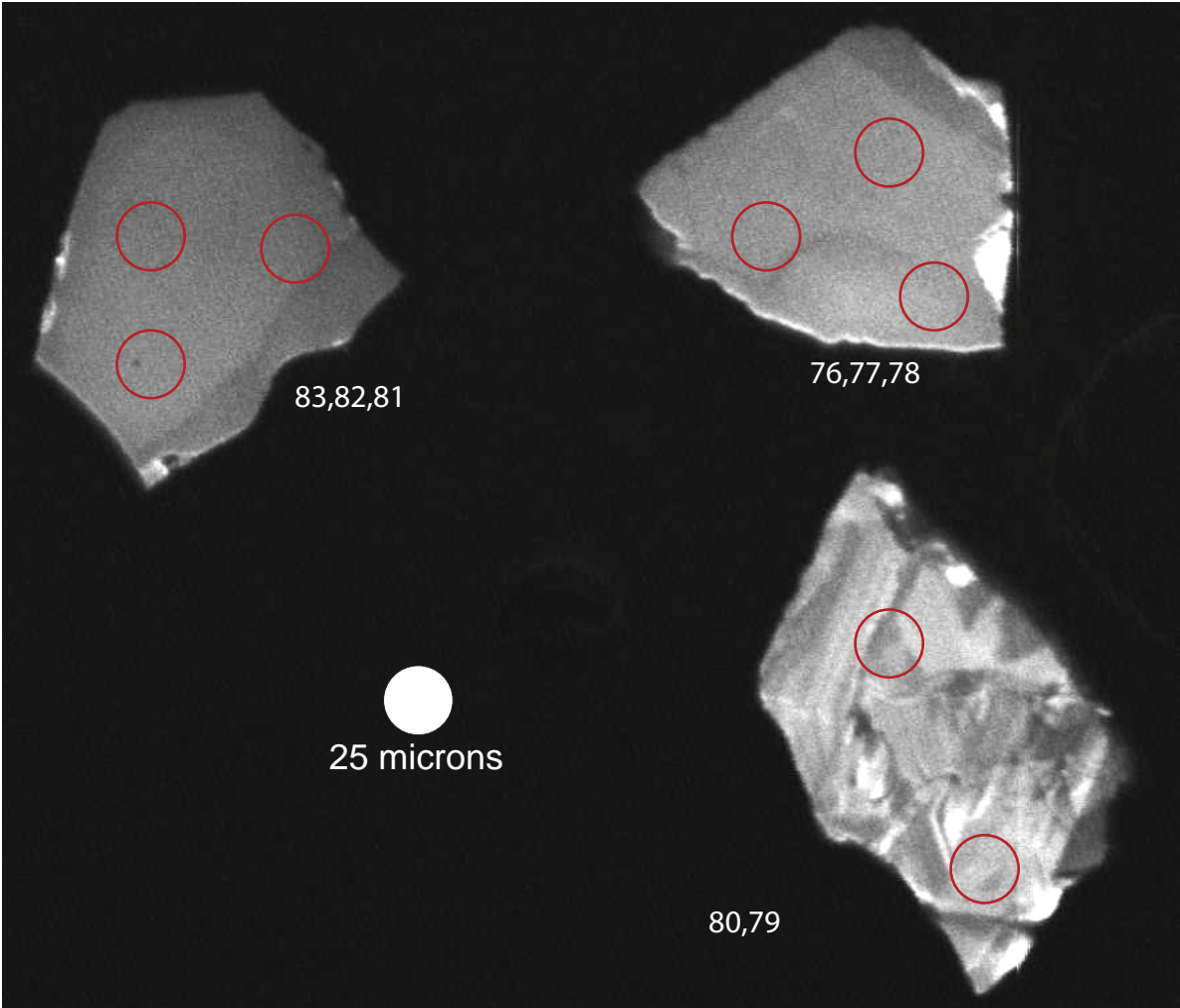




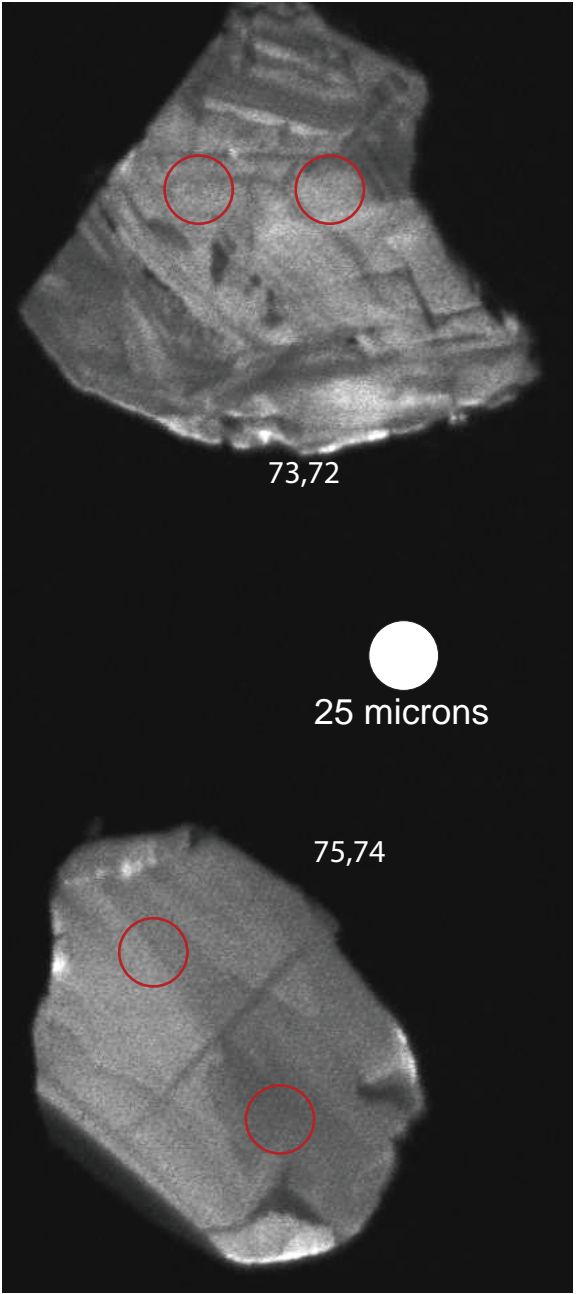
S



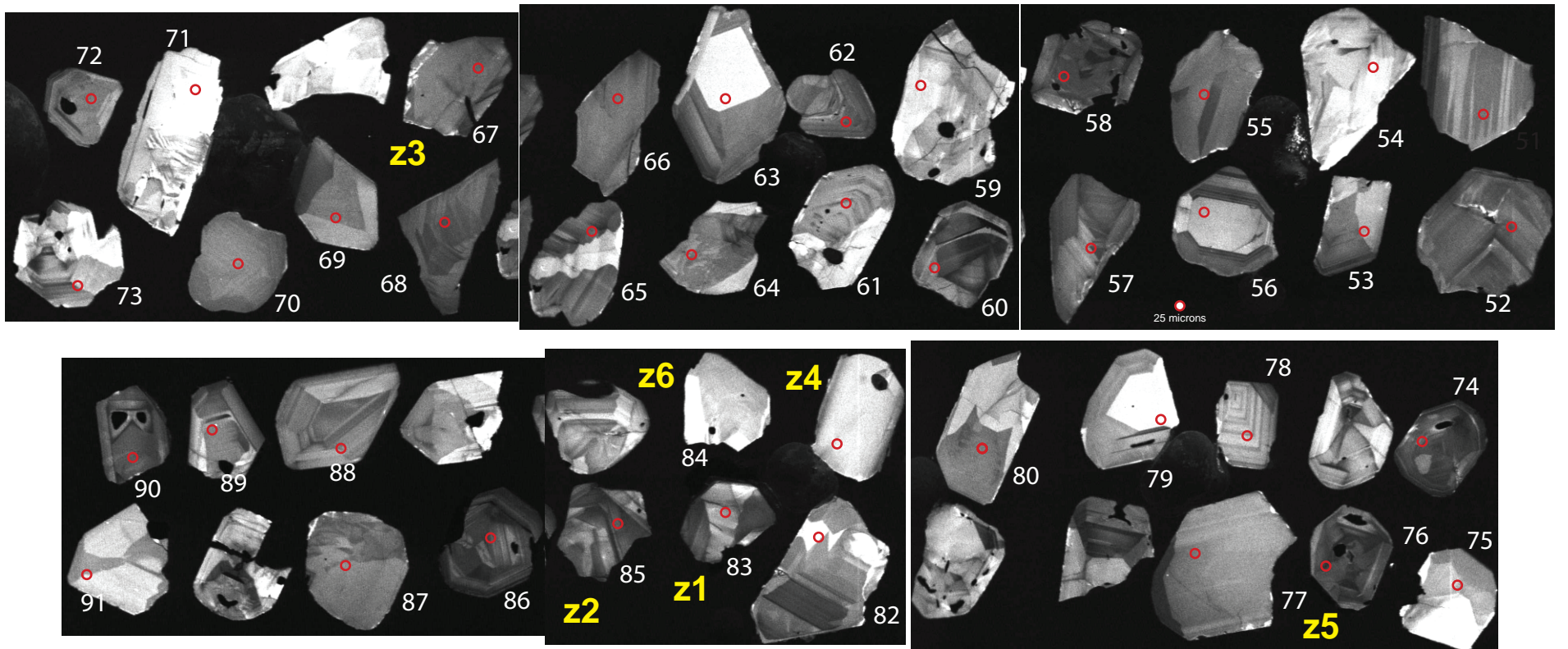
M



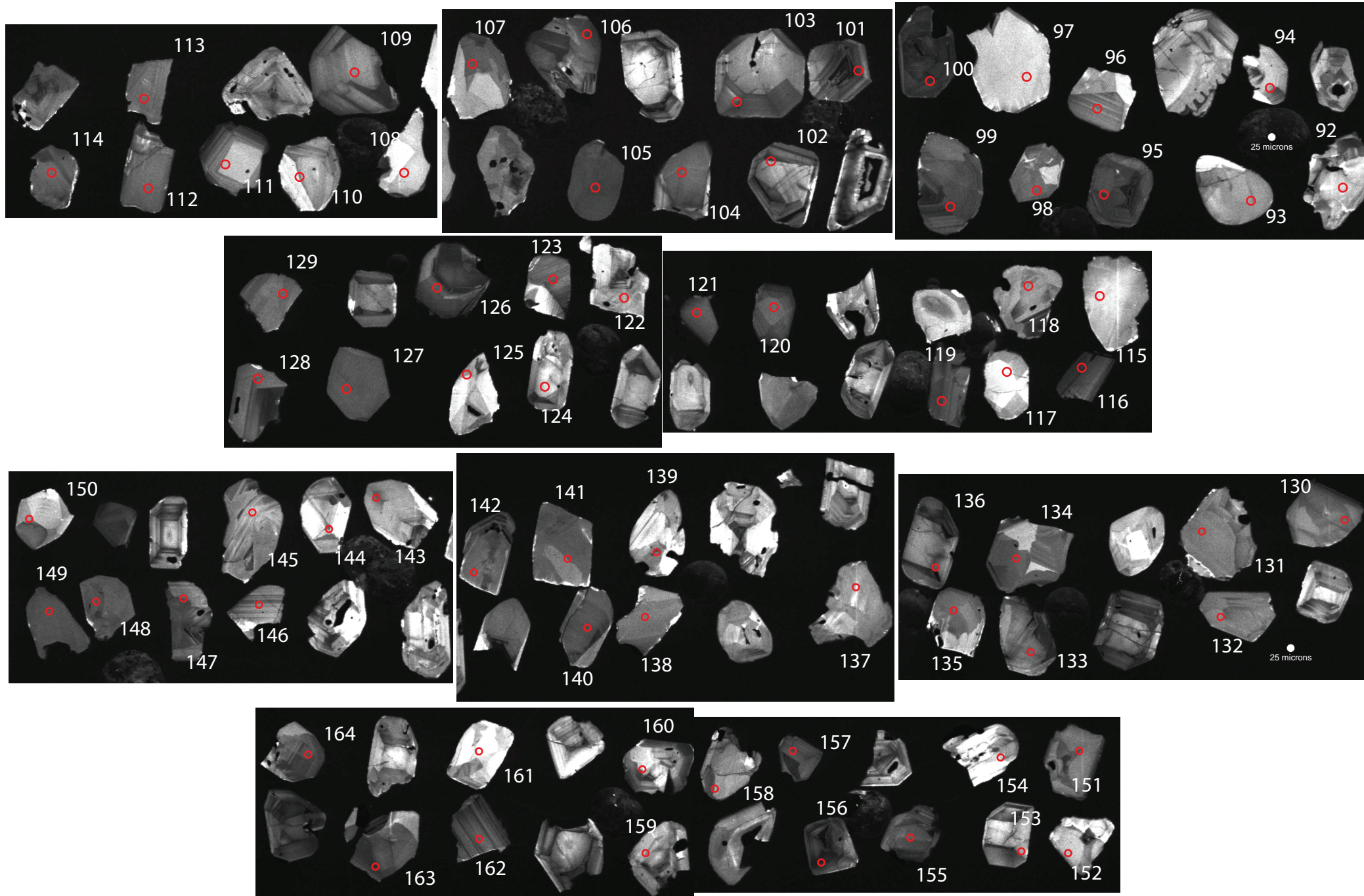
L



19RC016 L mount

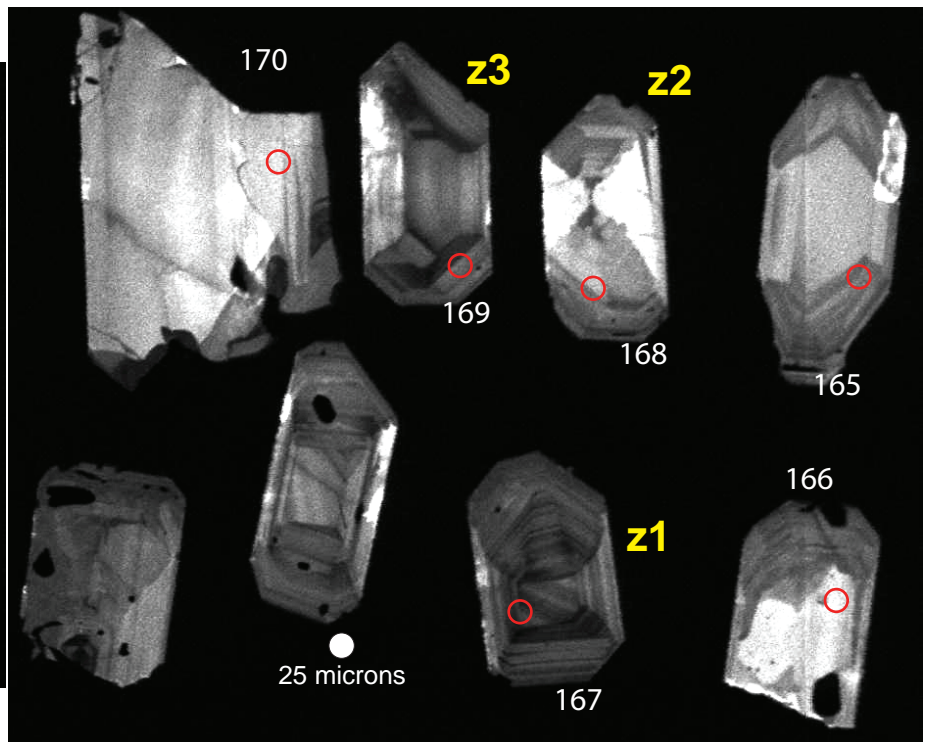
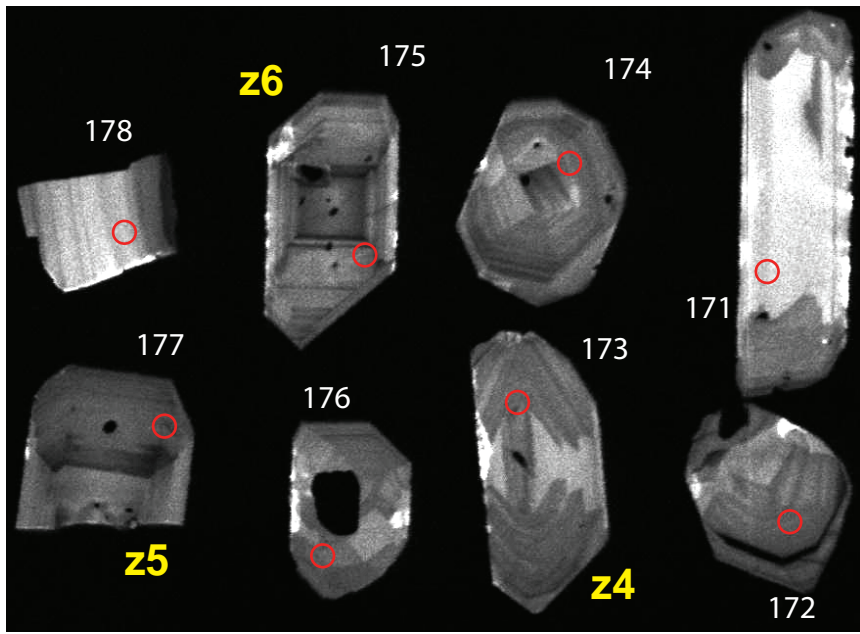


19RC016 M mount



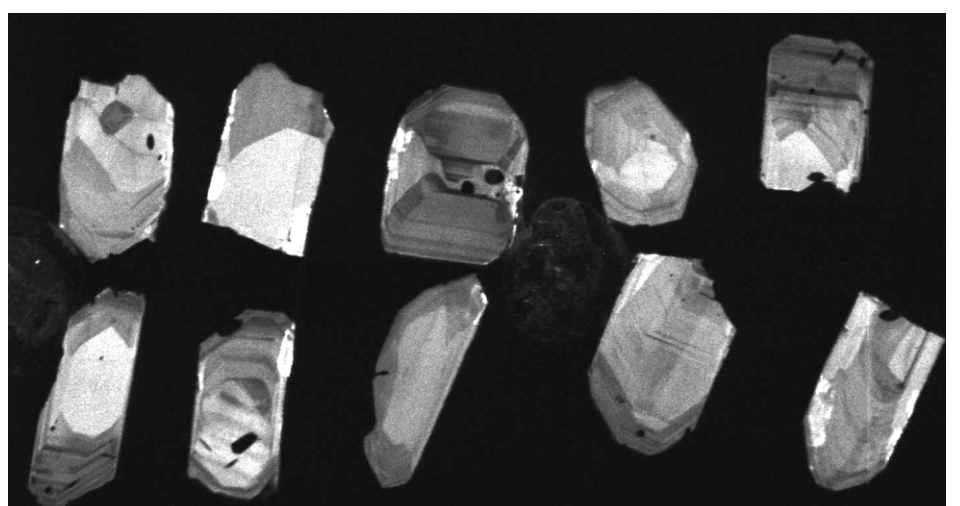
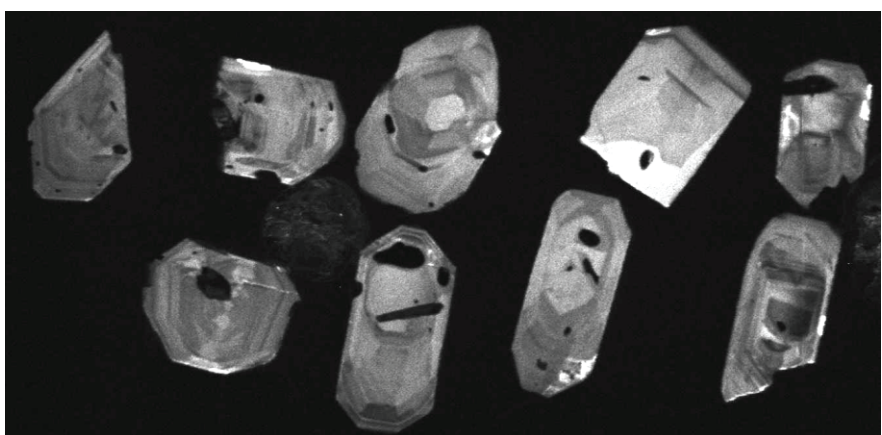
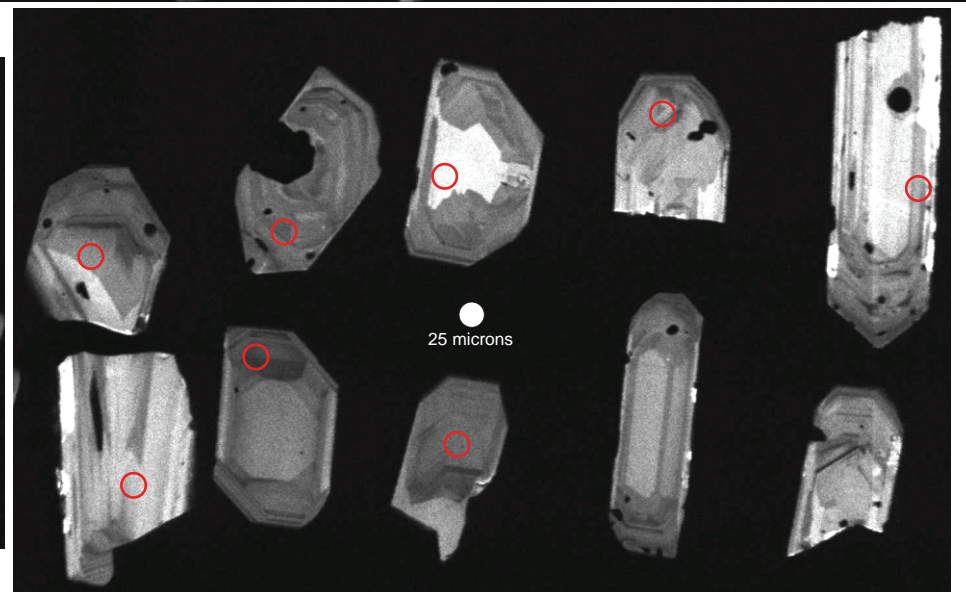
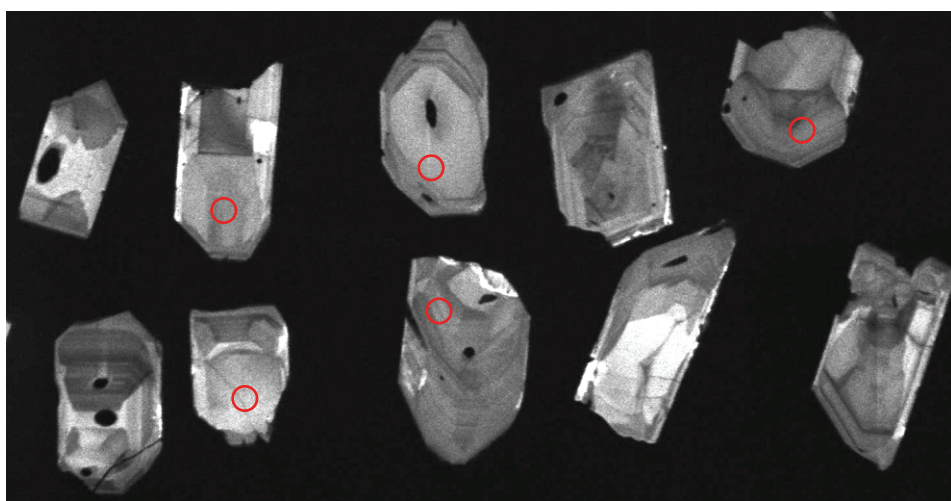
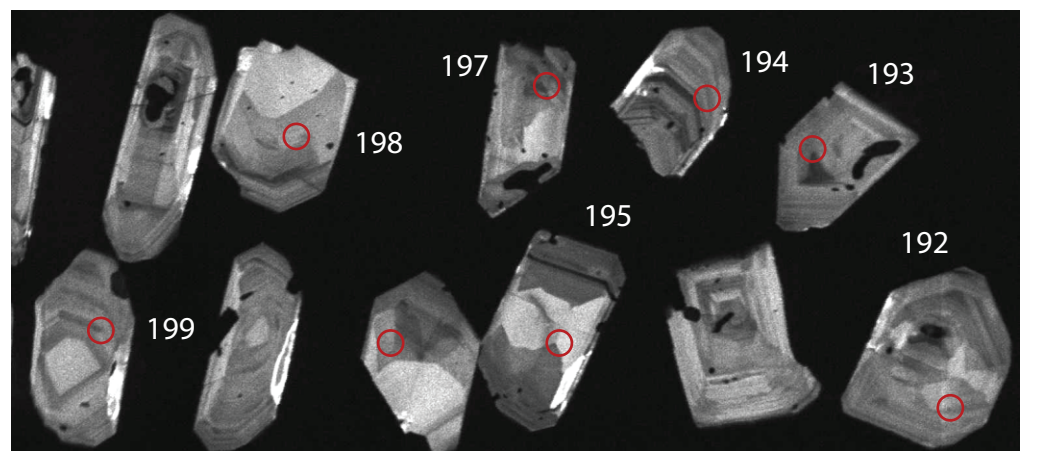
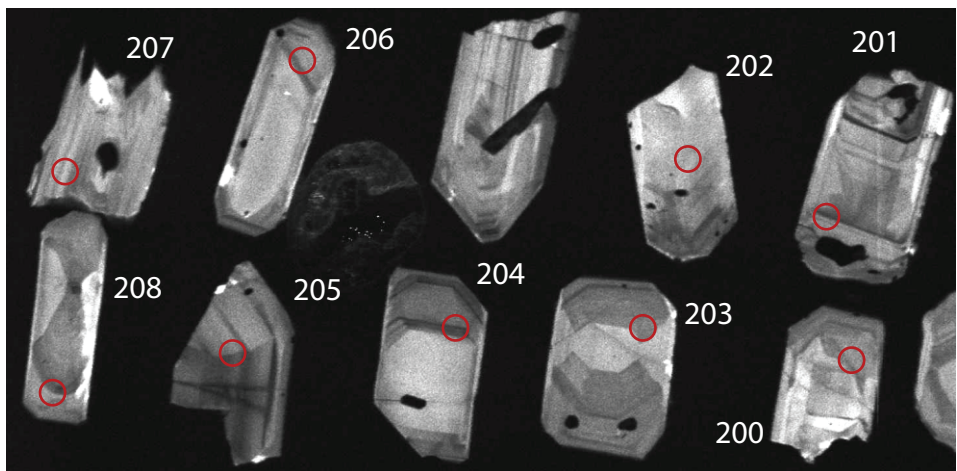
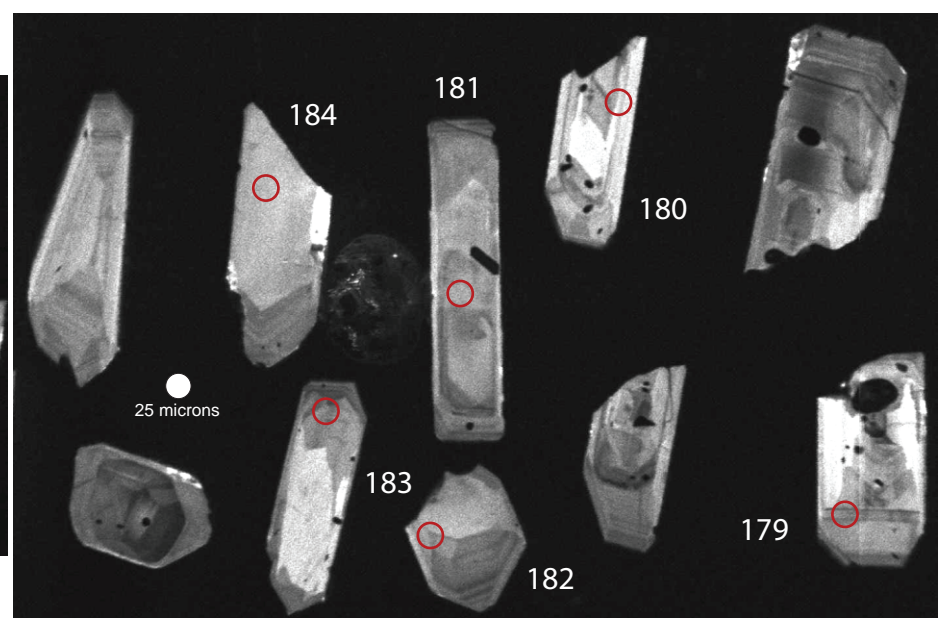
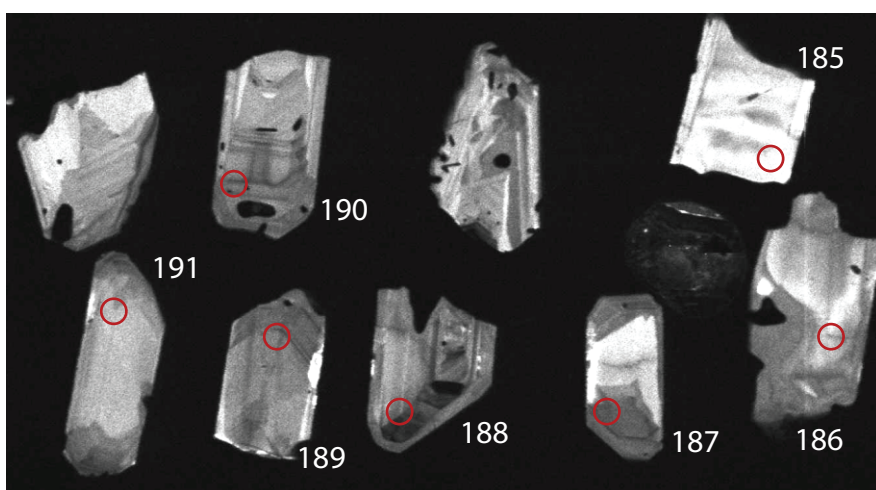
19RC170

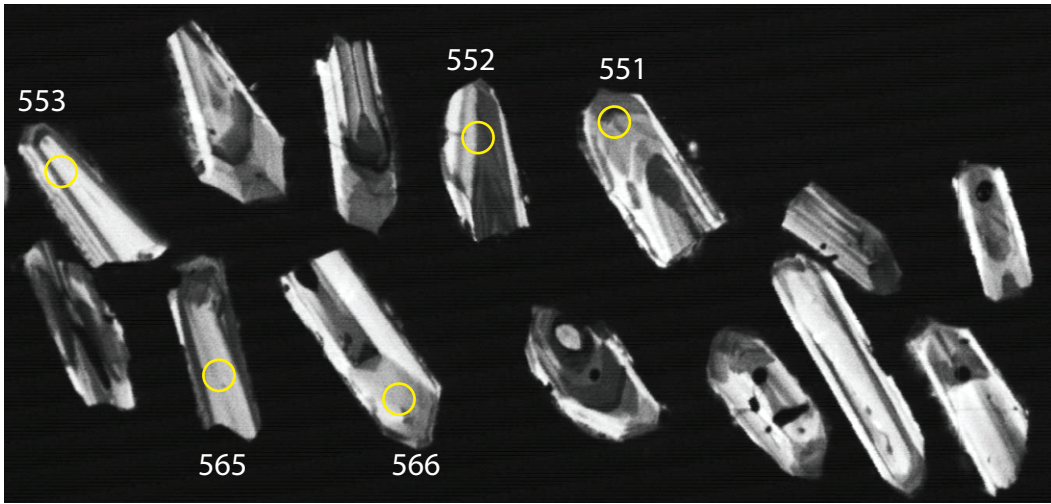
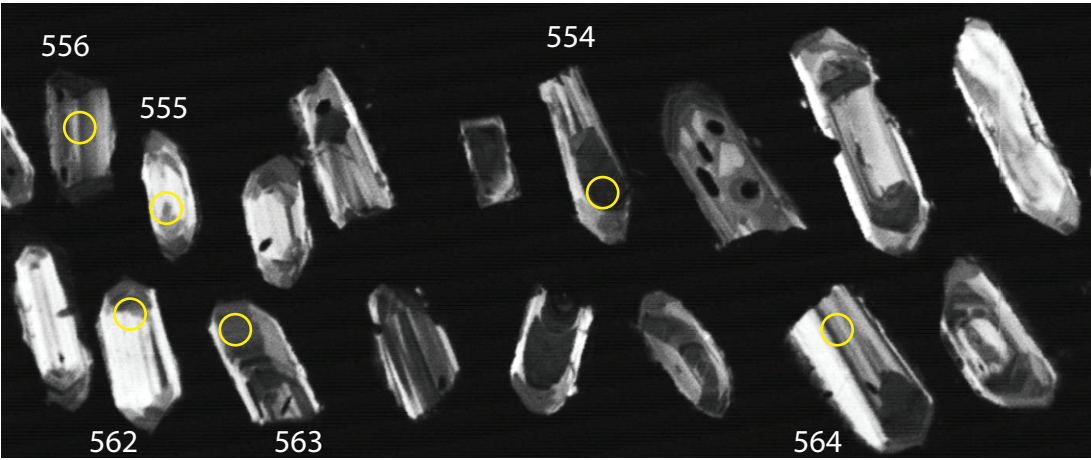
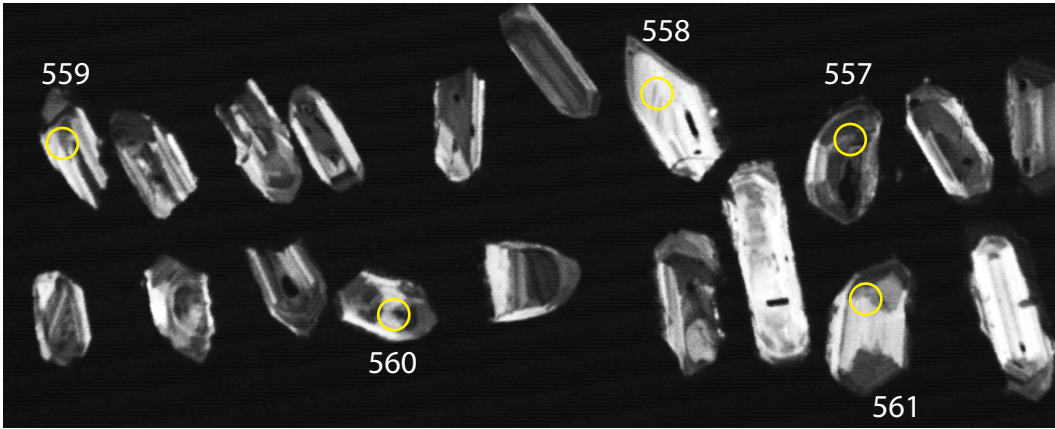
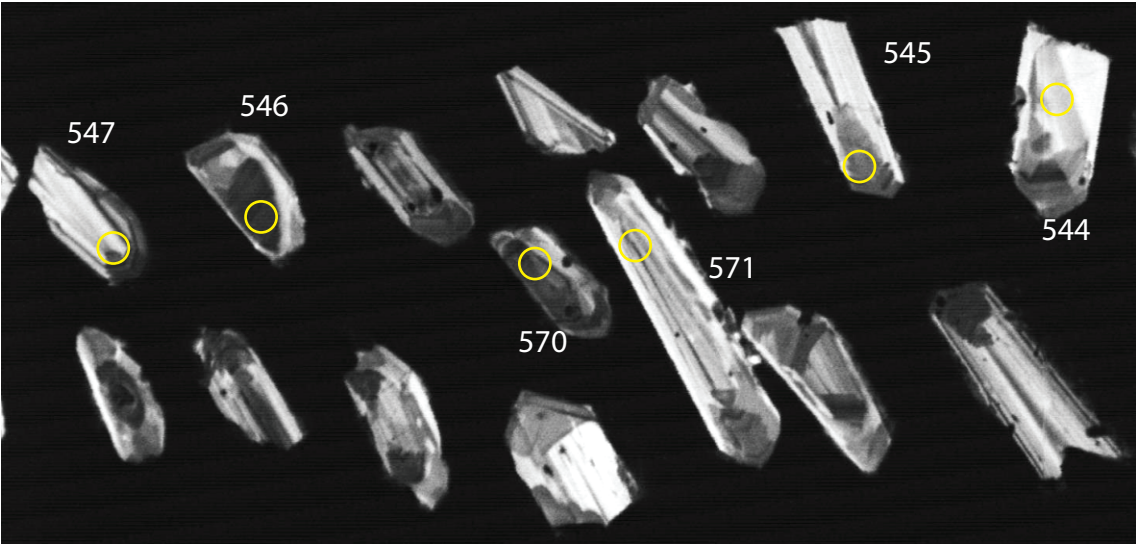
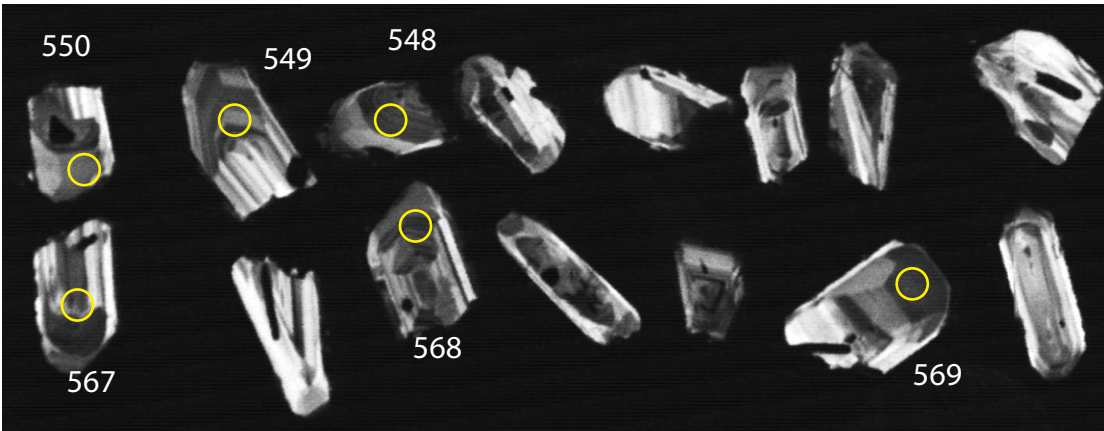
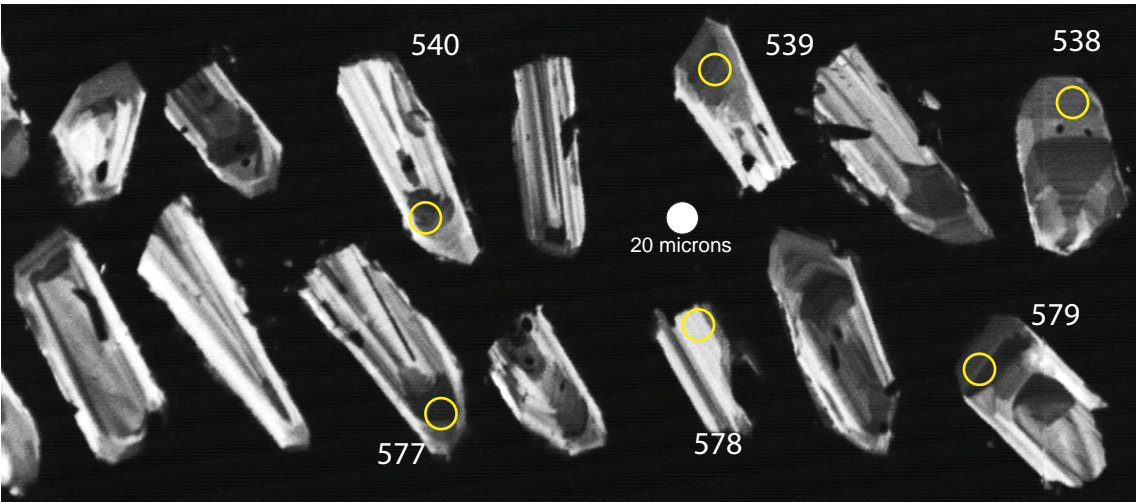
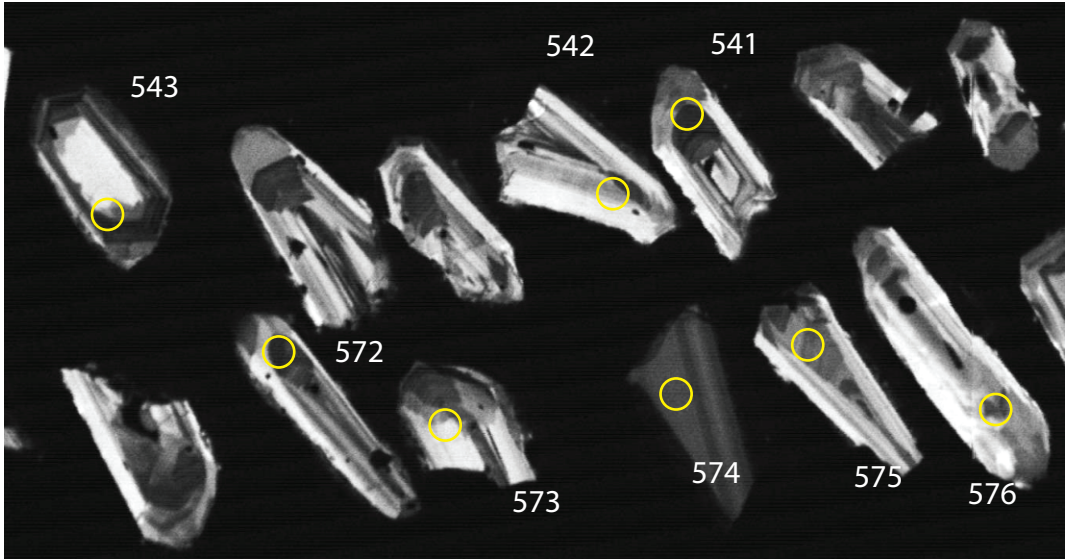
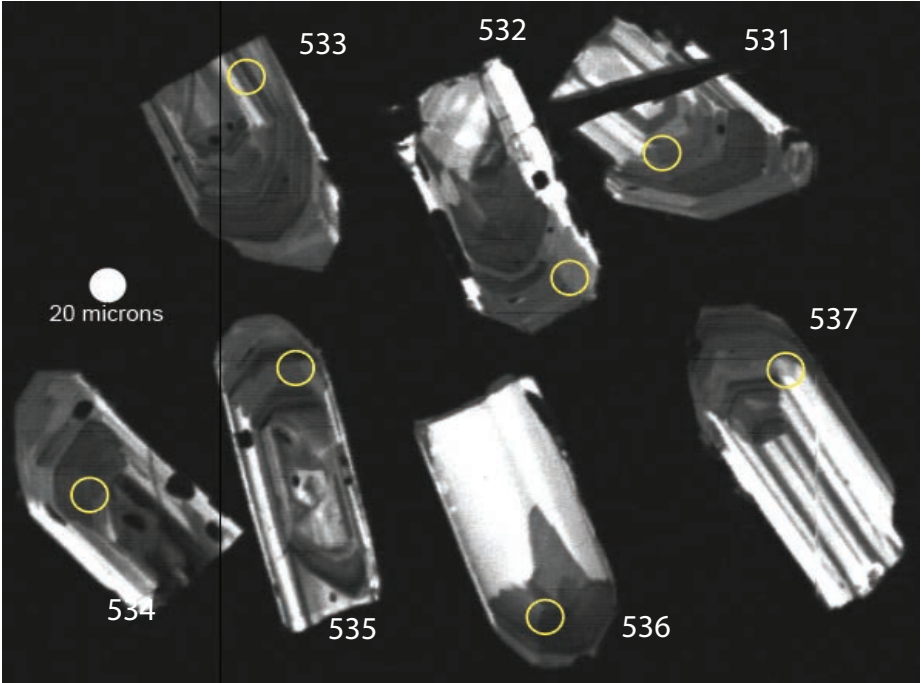
M mount



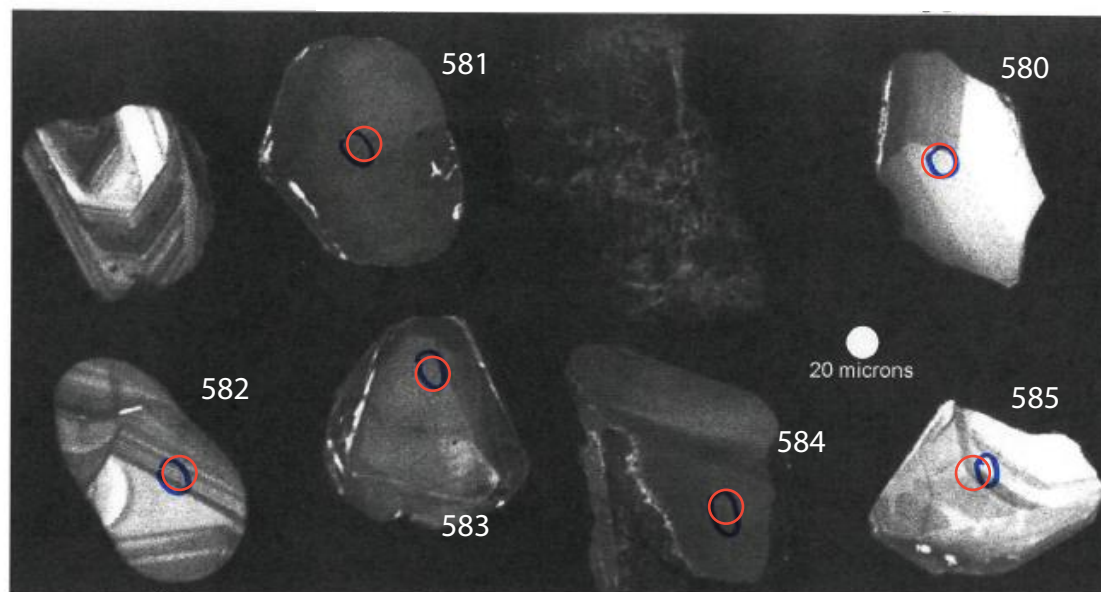
19RC170

S mount

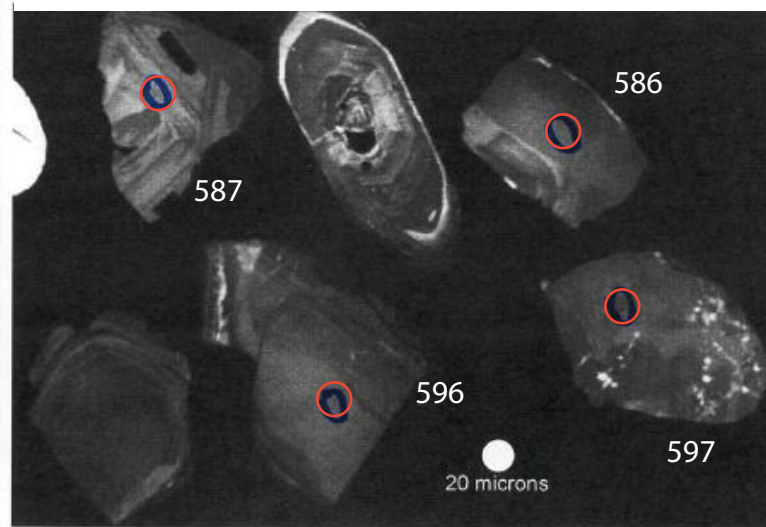
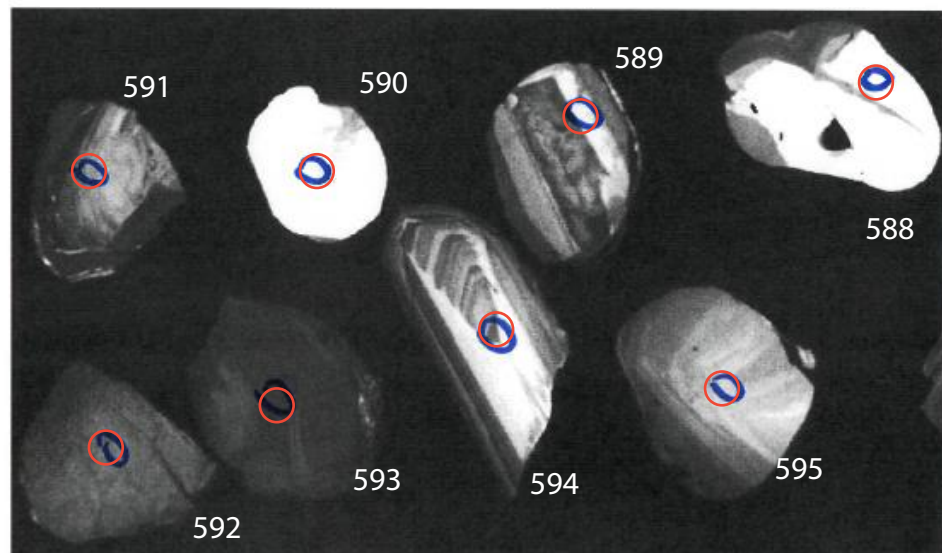


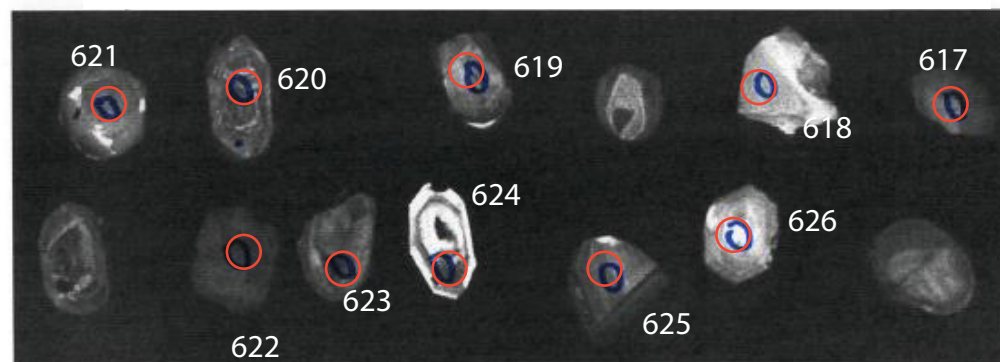
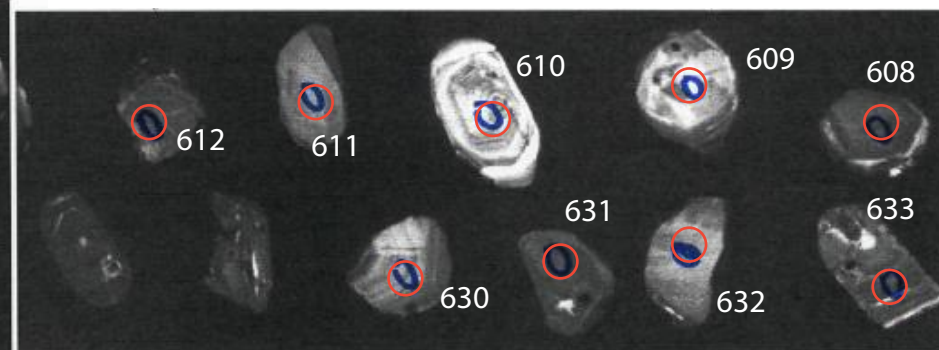
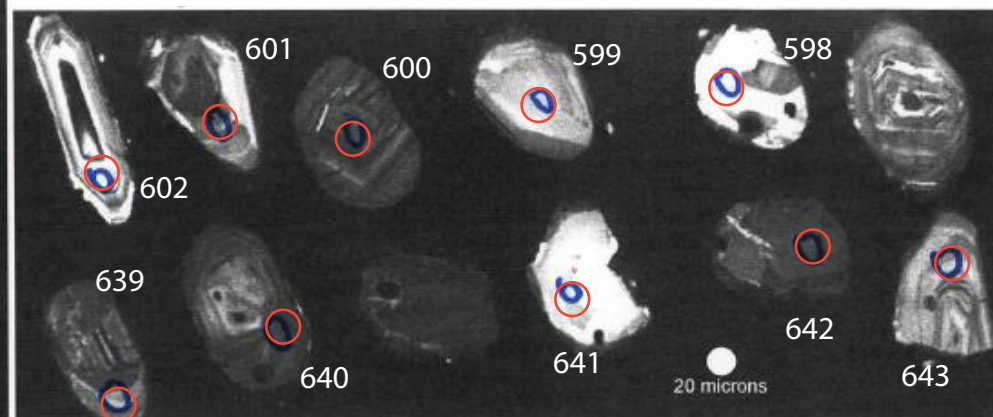


20RC092 M Sandstone Carpenter Ridge YGS BSU0686-0689 21.June21

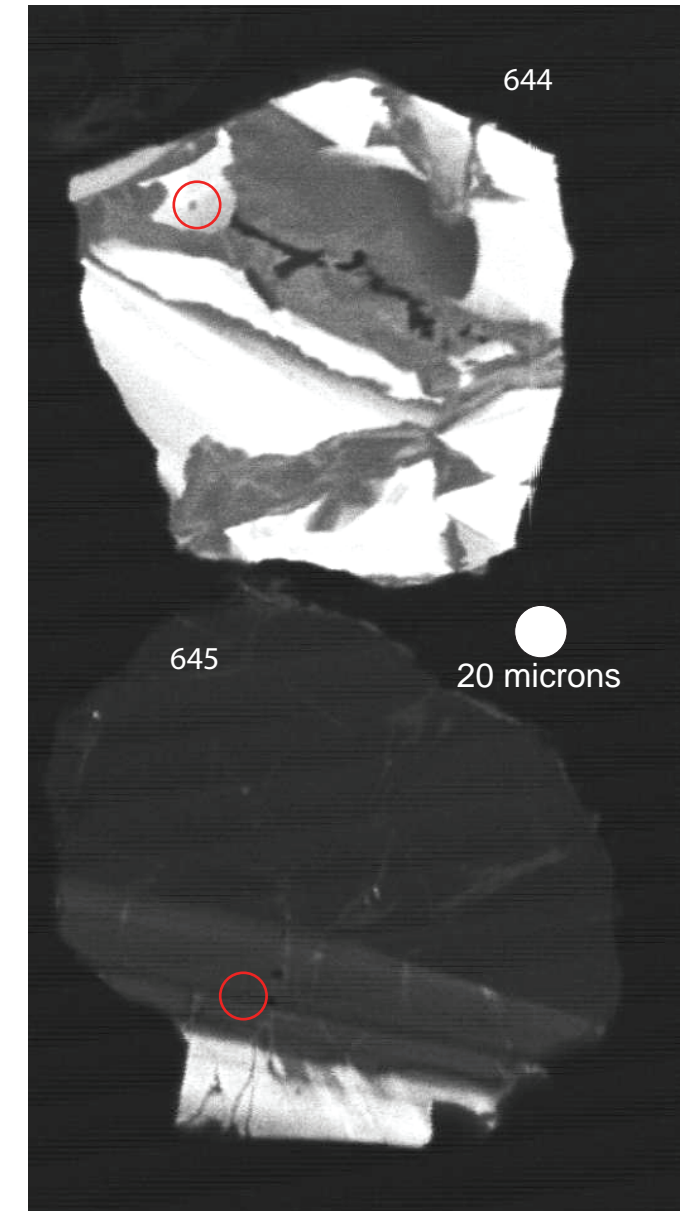
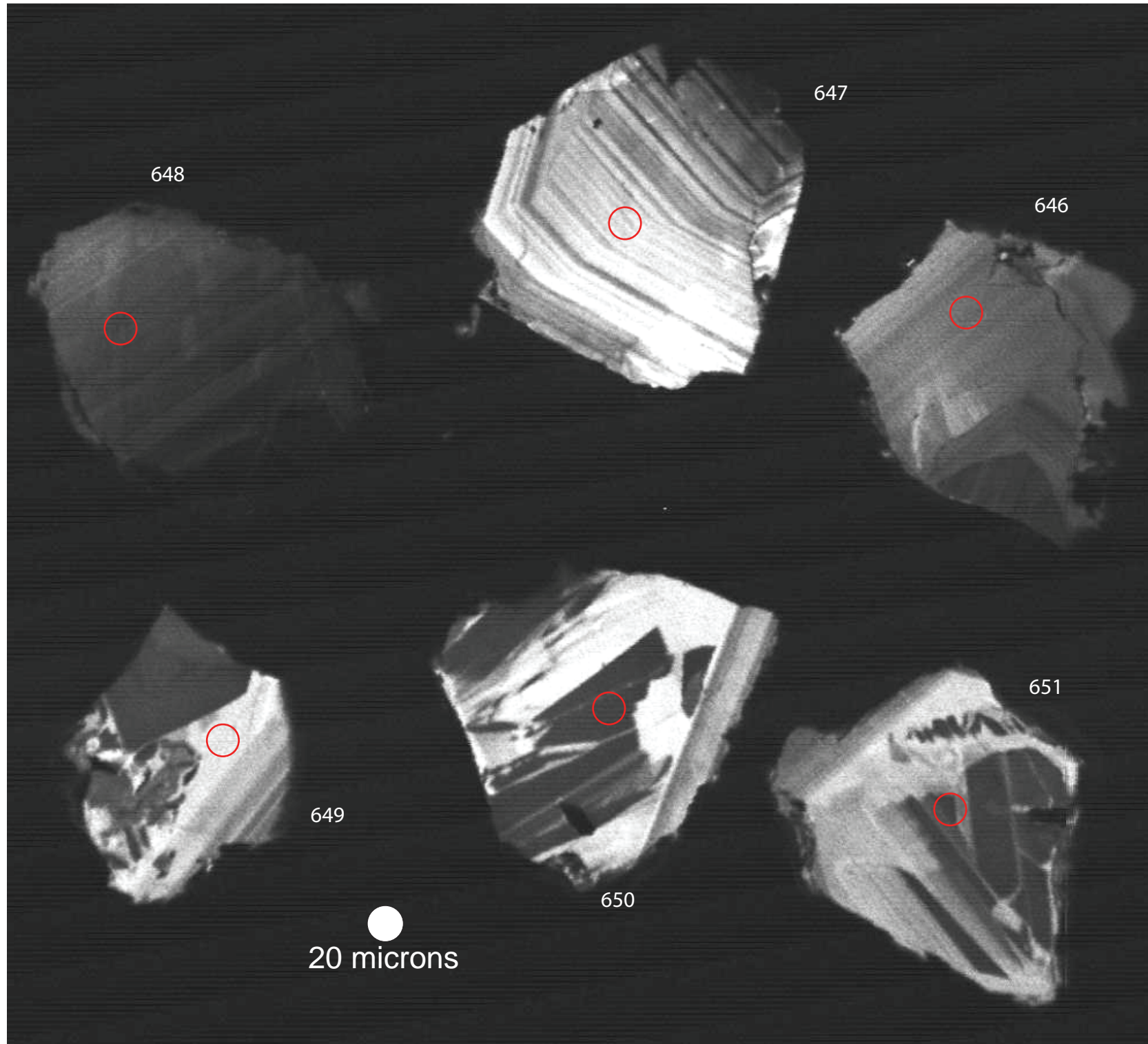


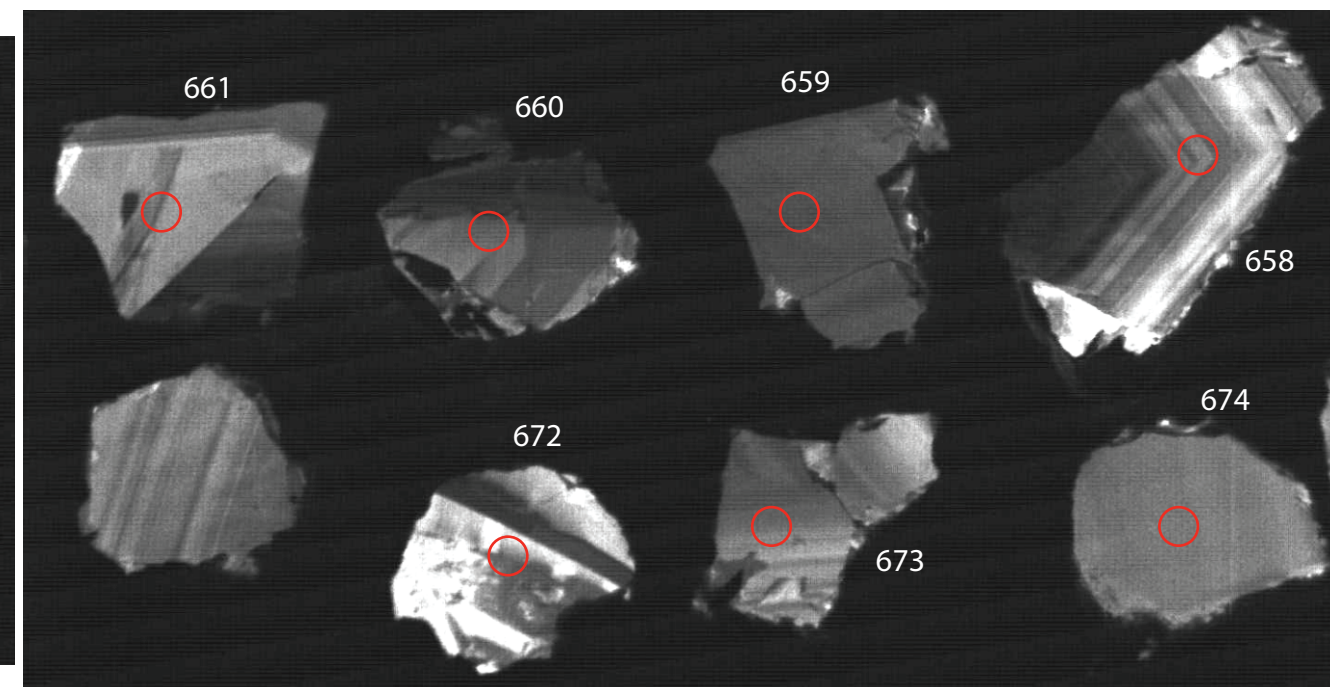
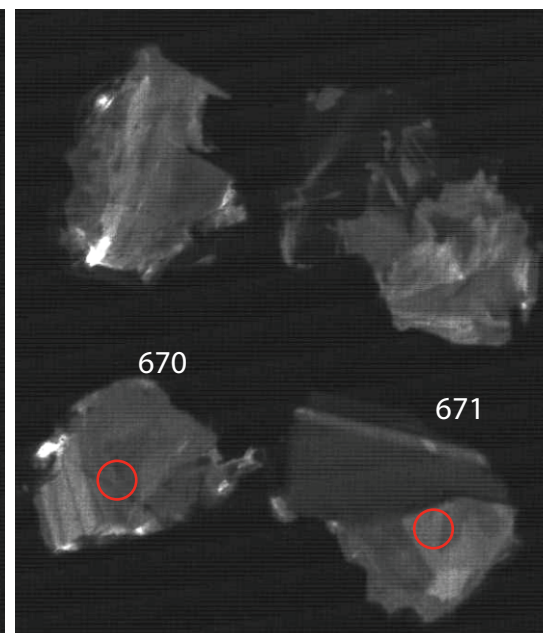
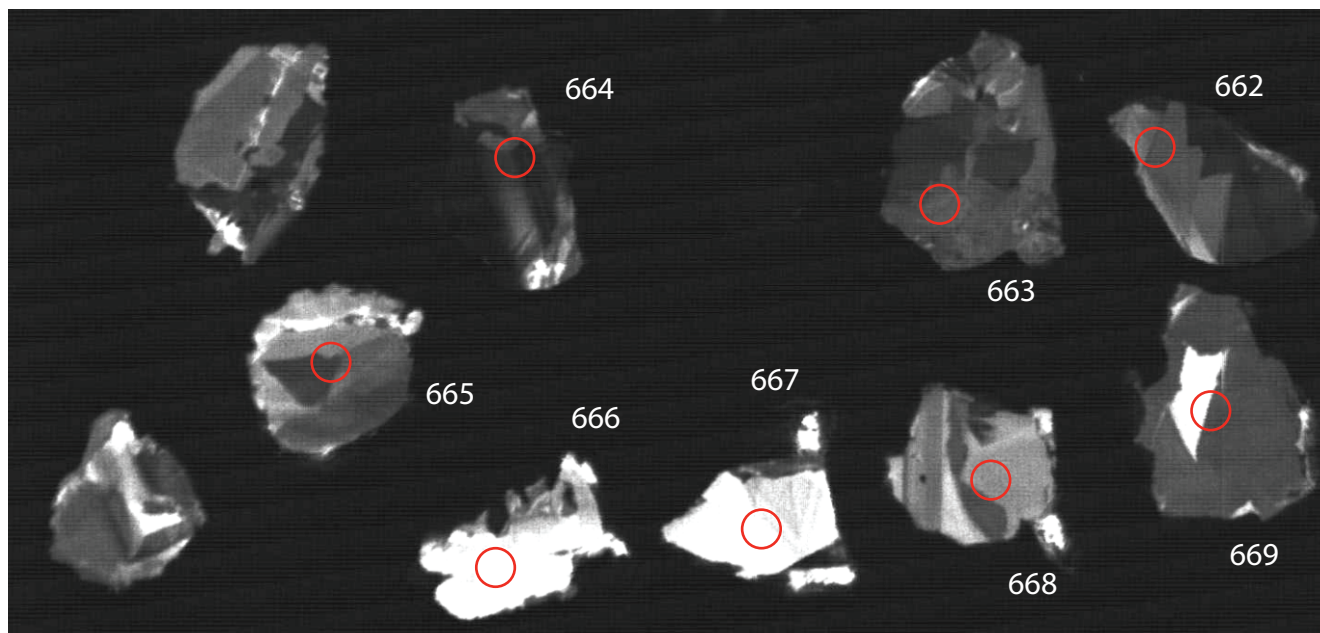
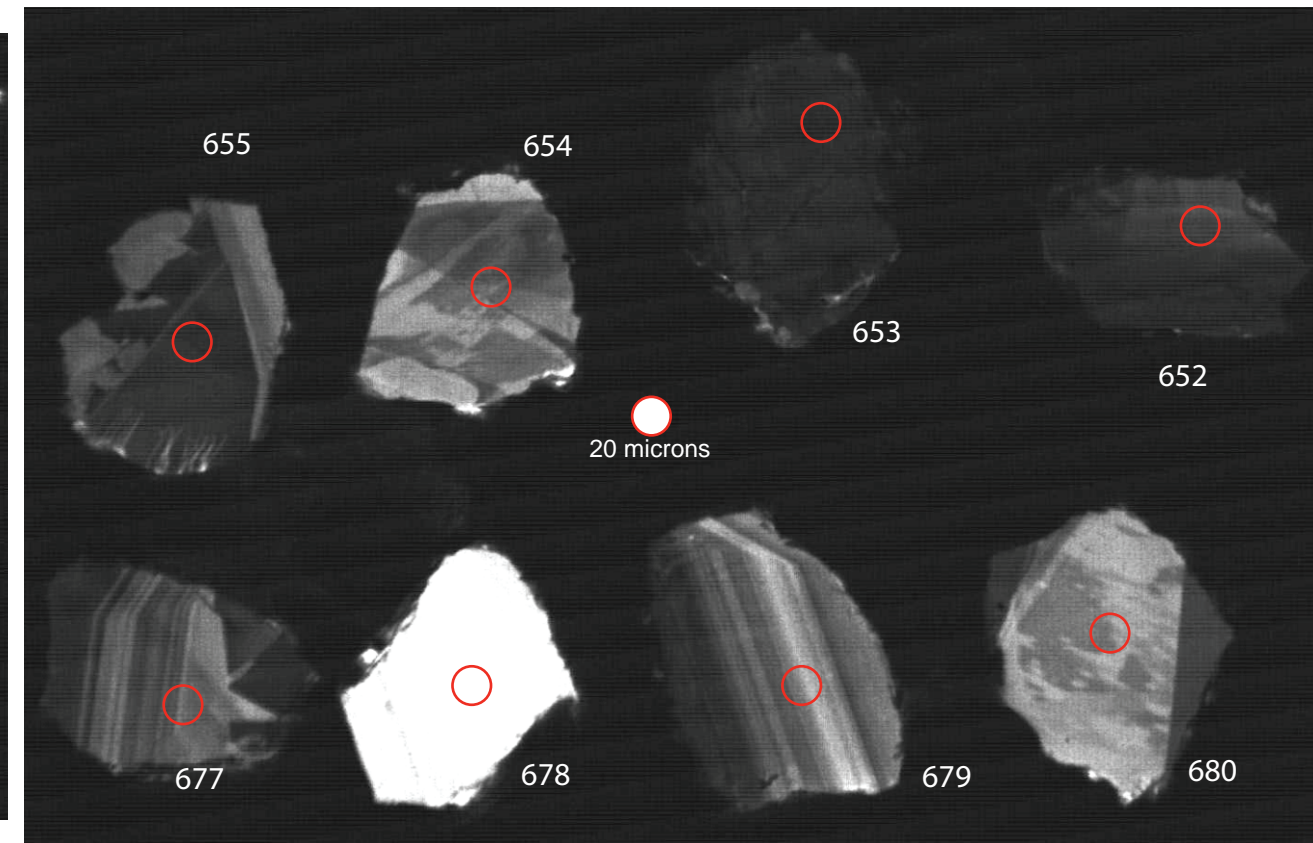
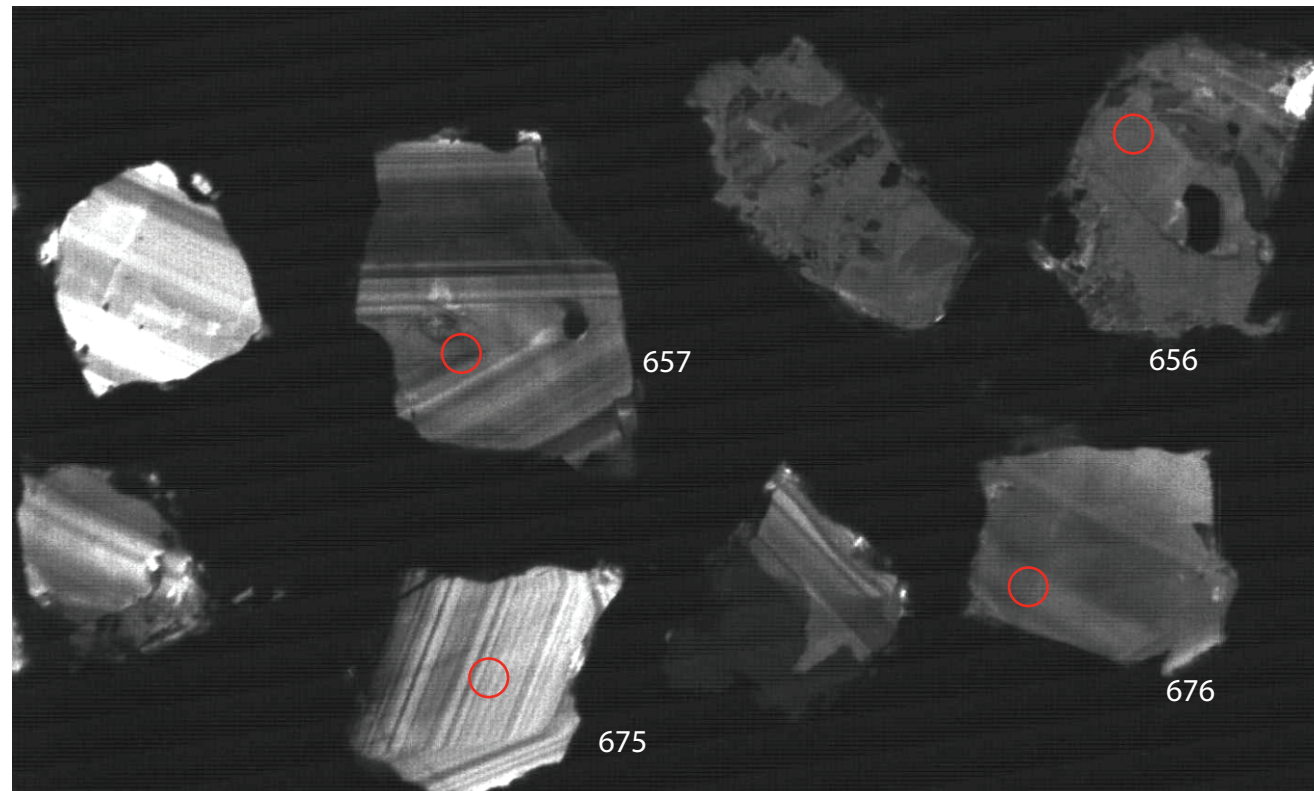
20RC092 S

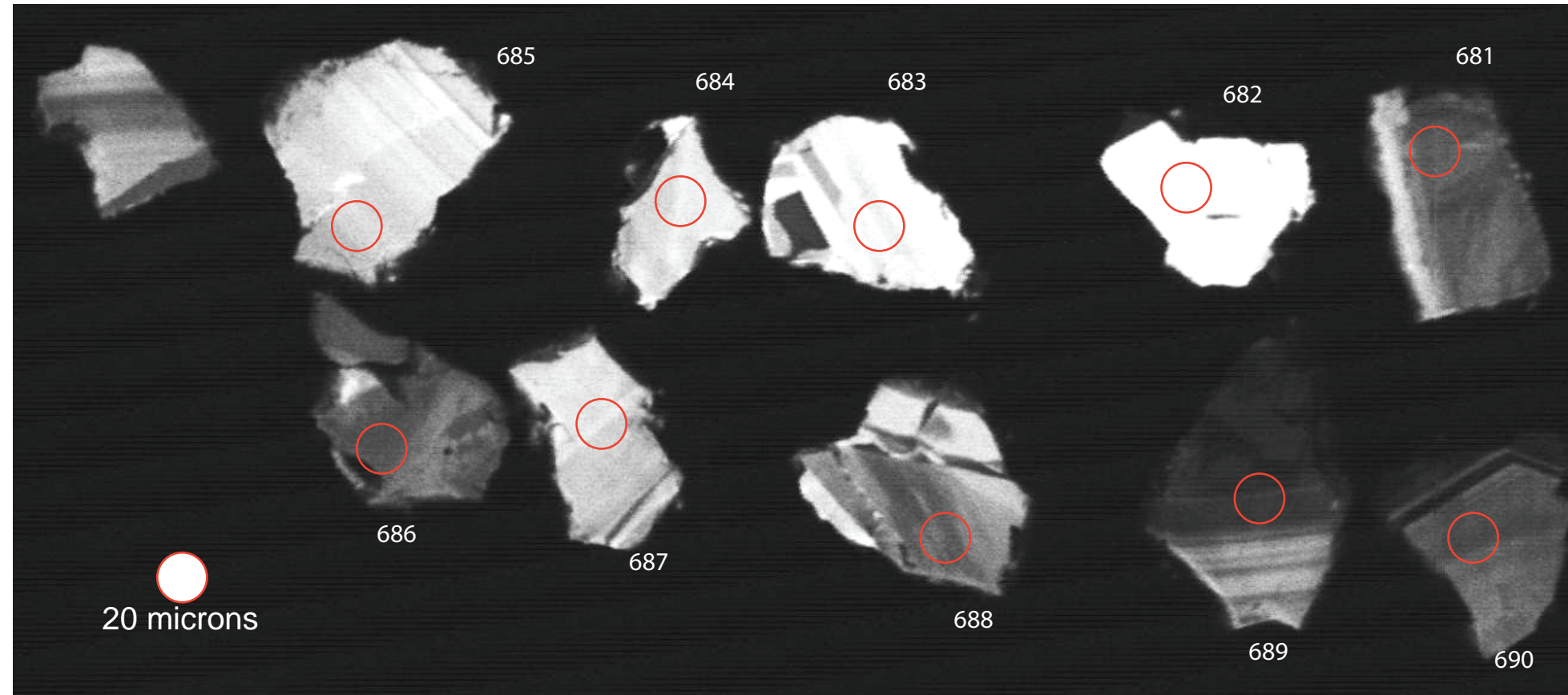


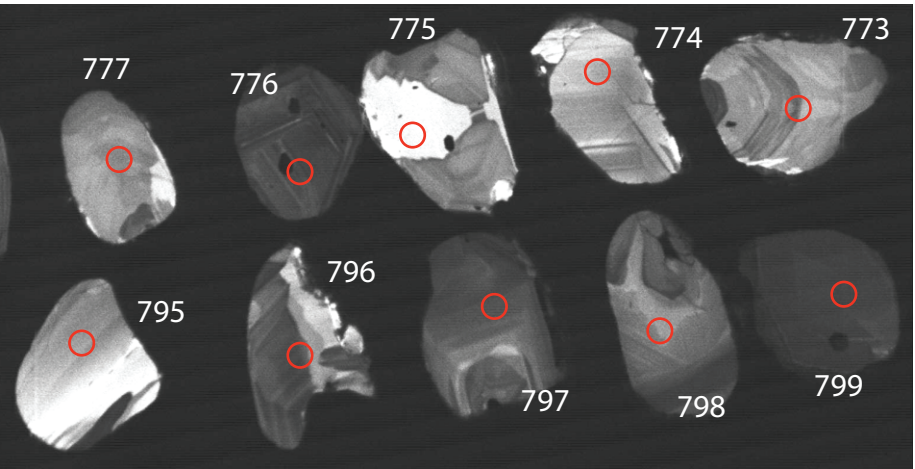
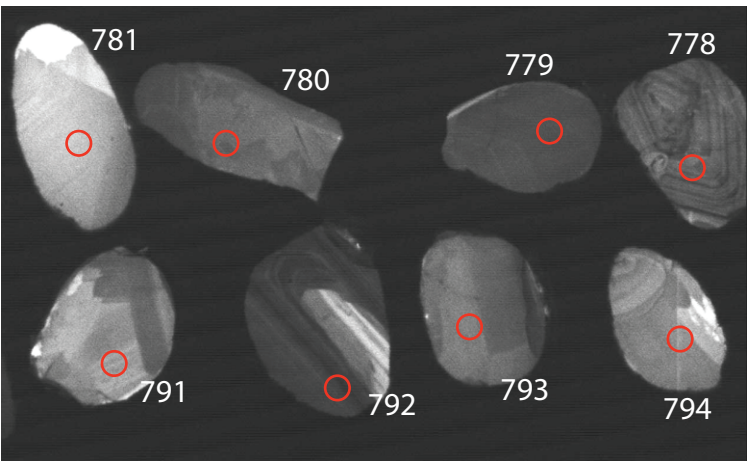
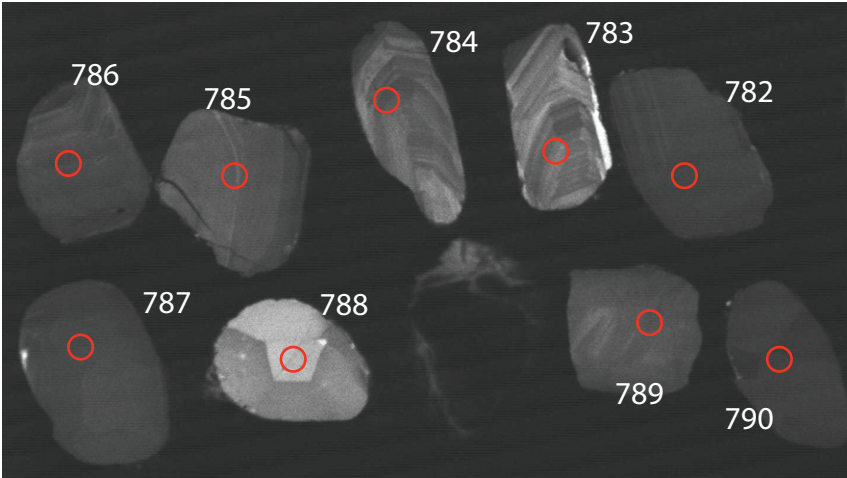
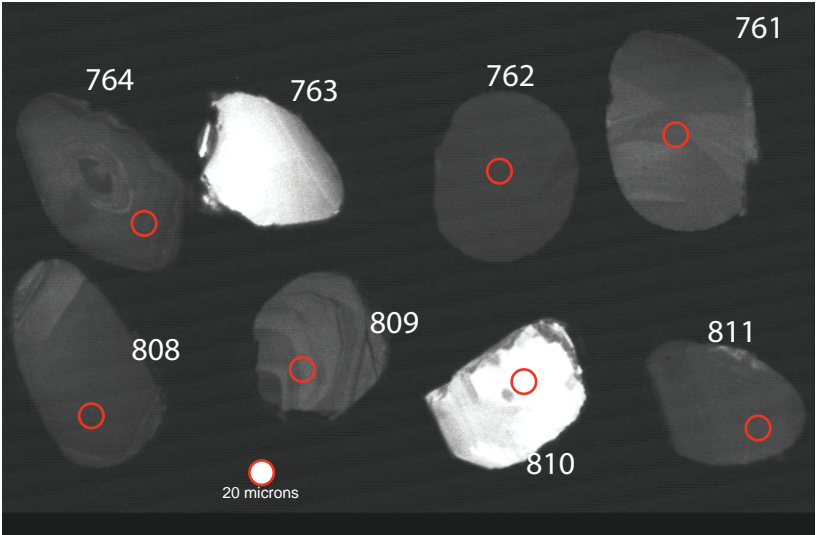
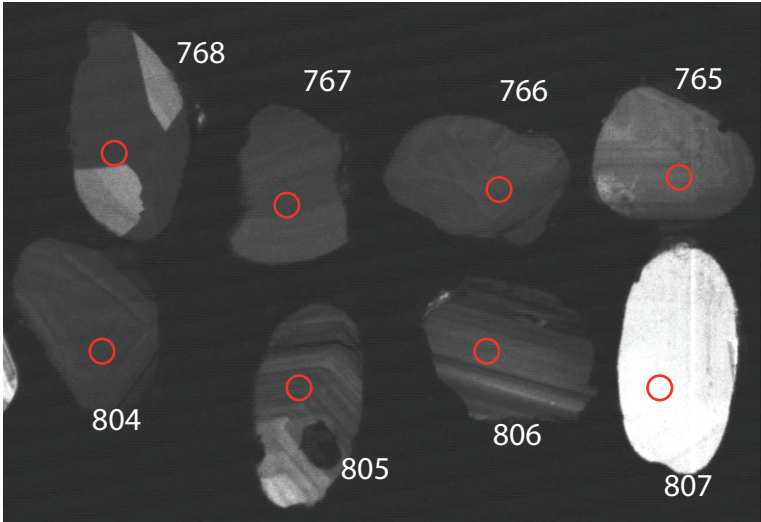
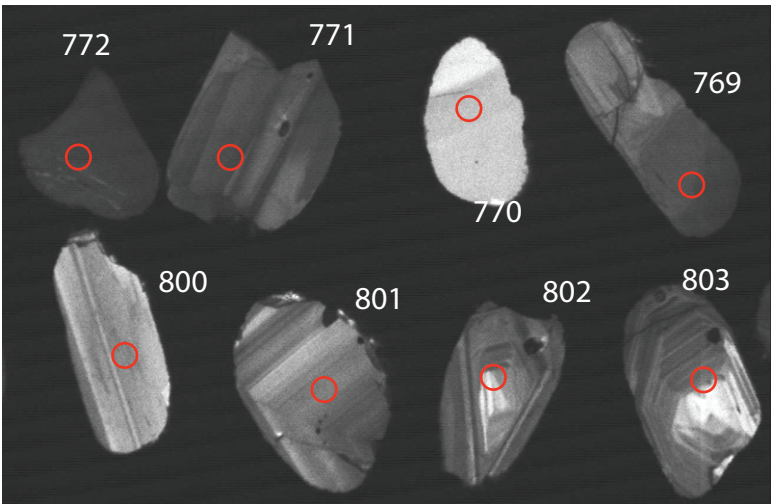


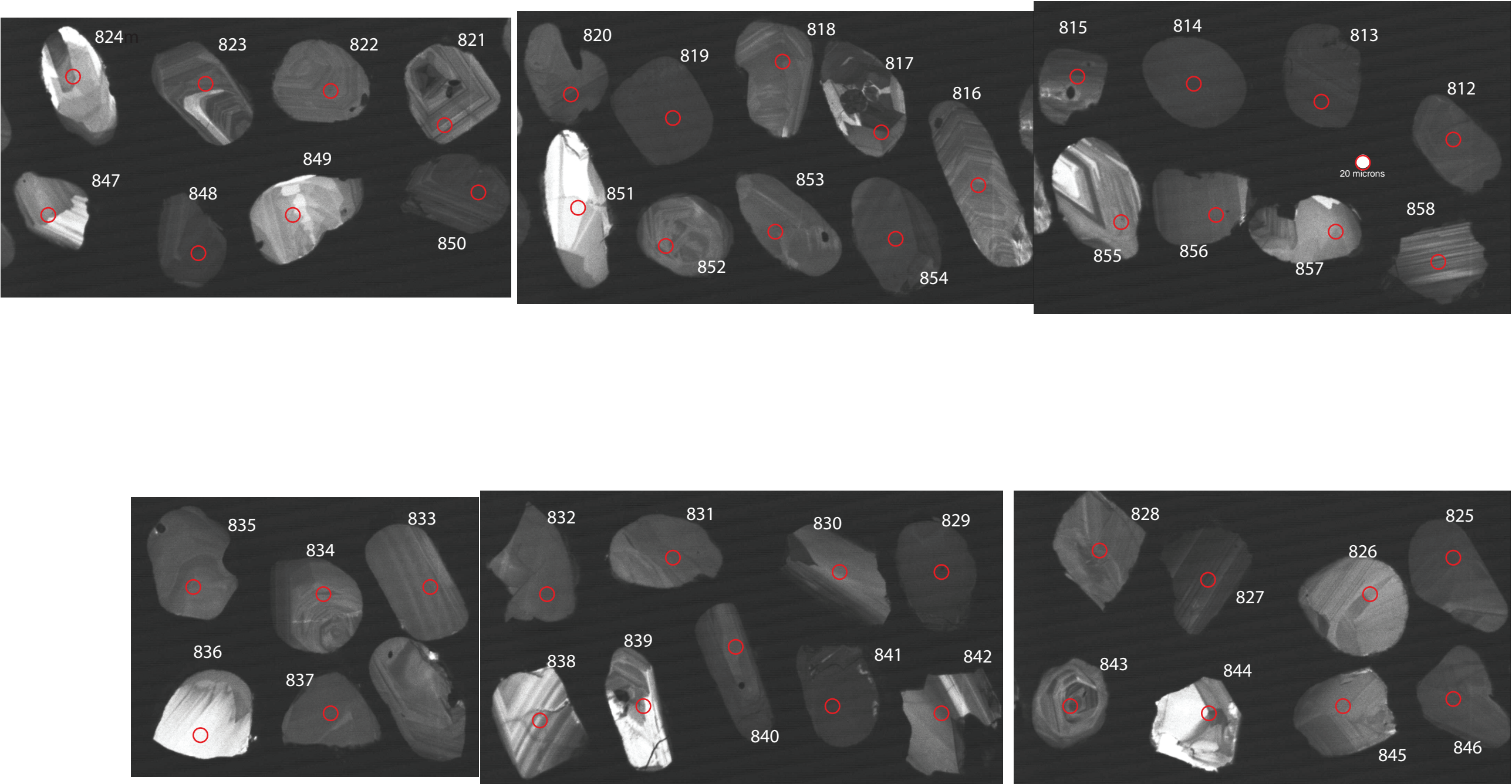
20RC142-1 M

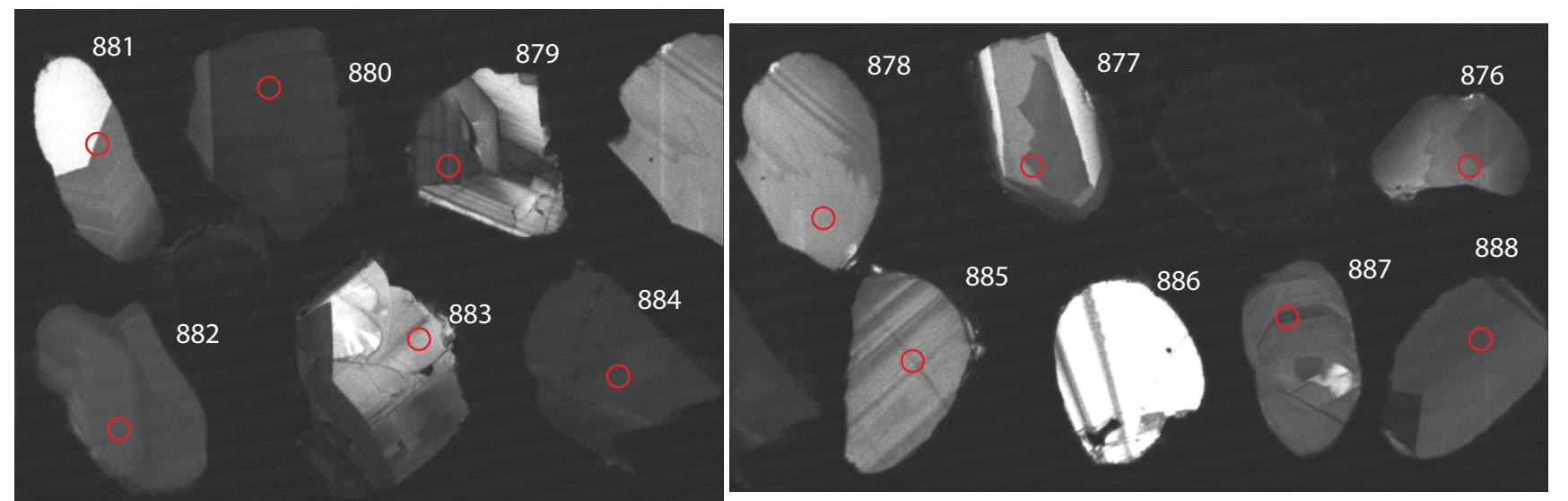
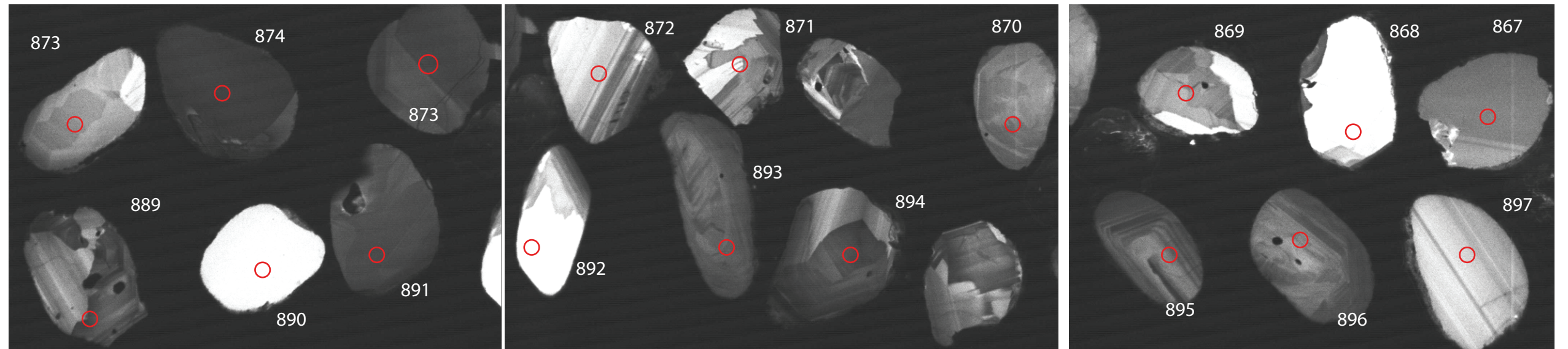
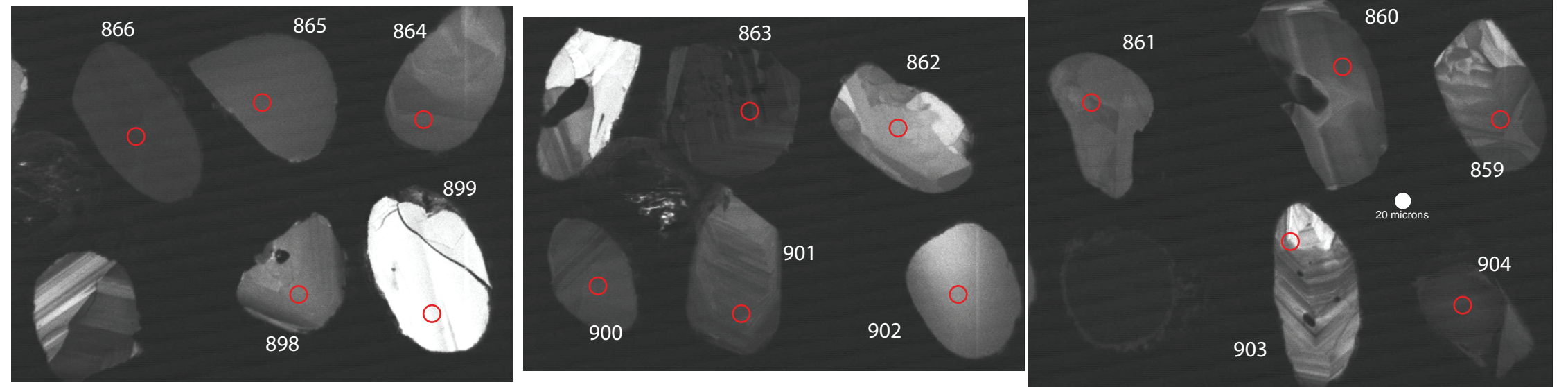












22RC029-1

L

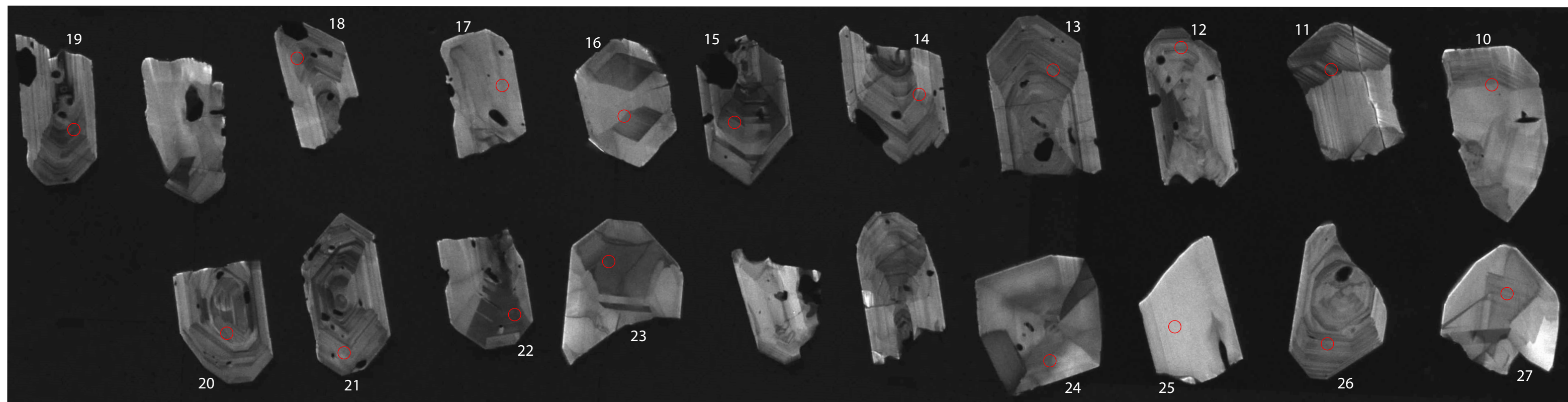
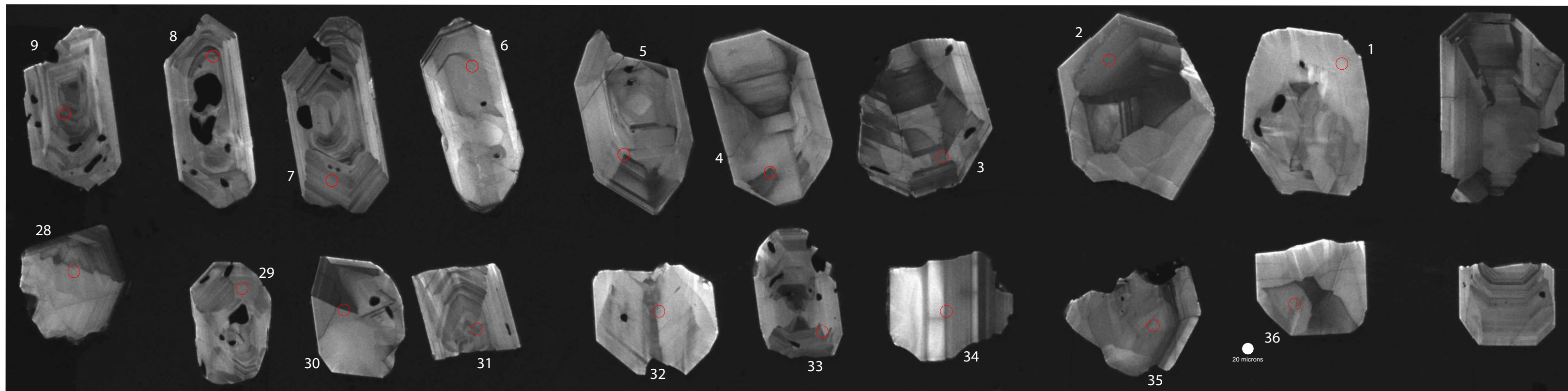
Arkosic Sandstone

Bouvette

YGS

BSU1050-1053

19May23



22RC029-1

M

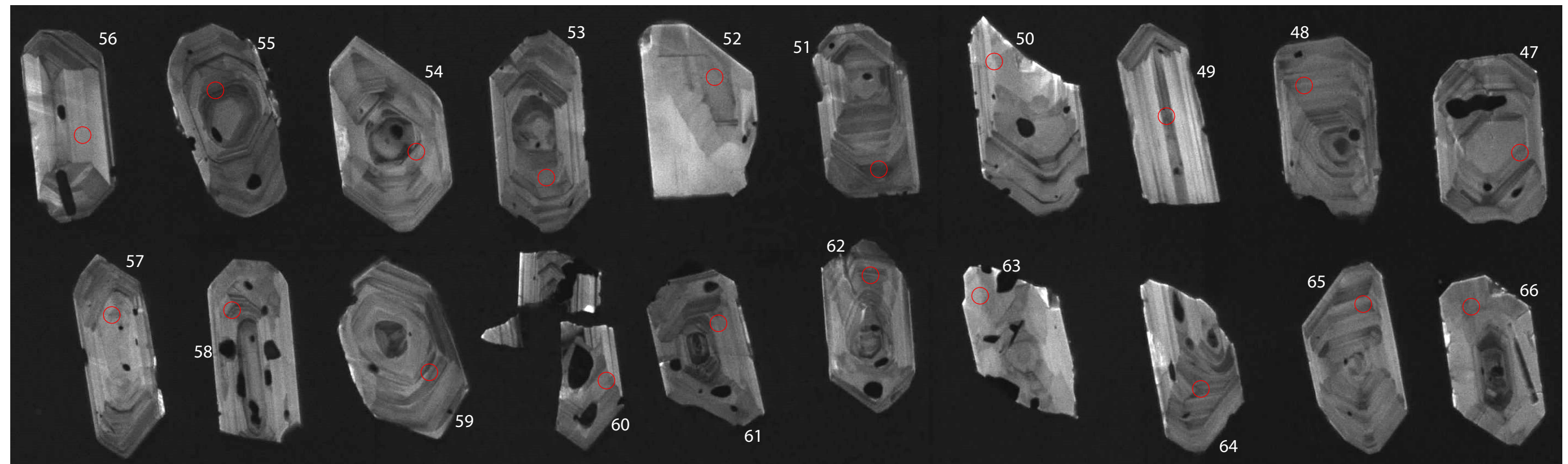
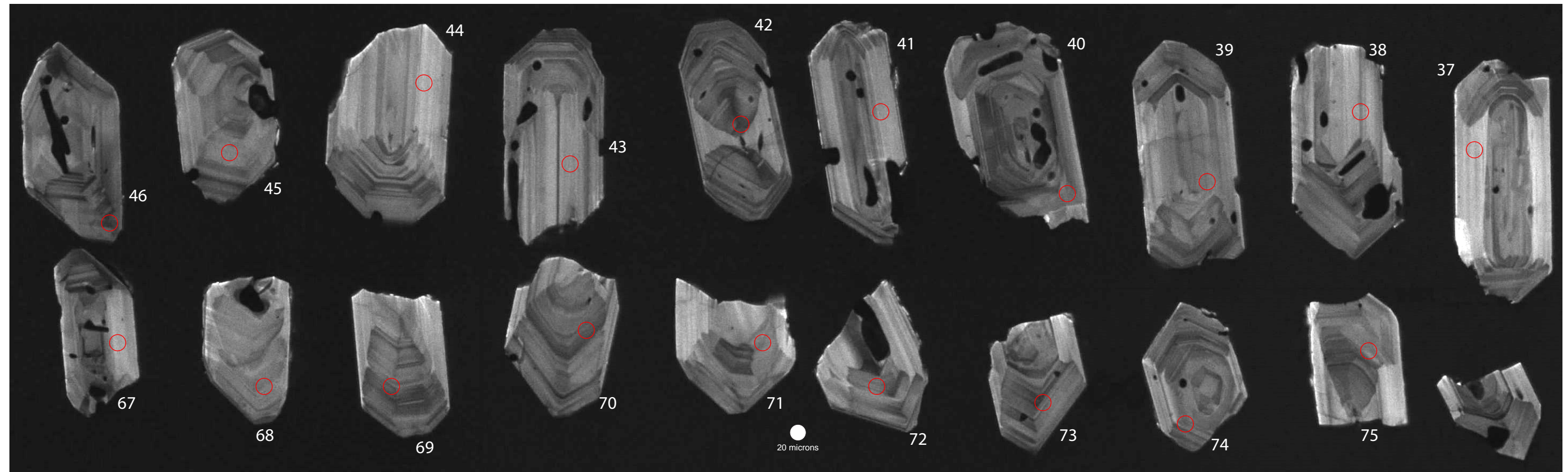
Arkosic Sandstone

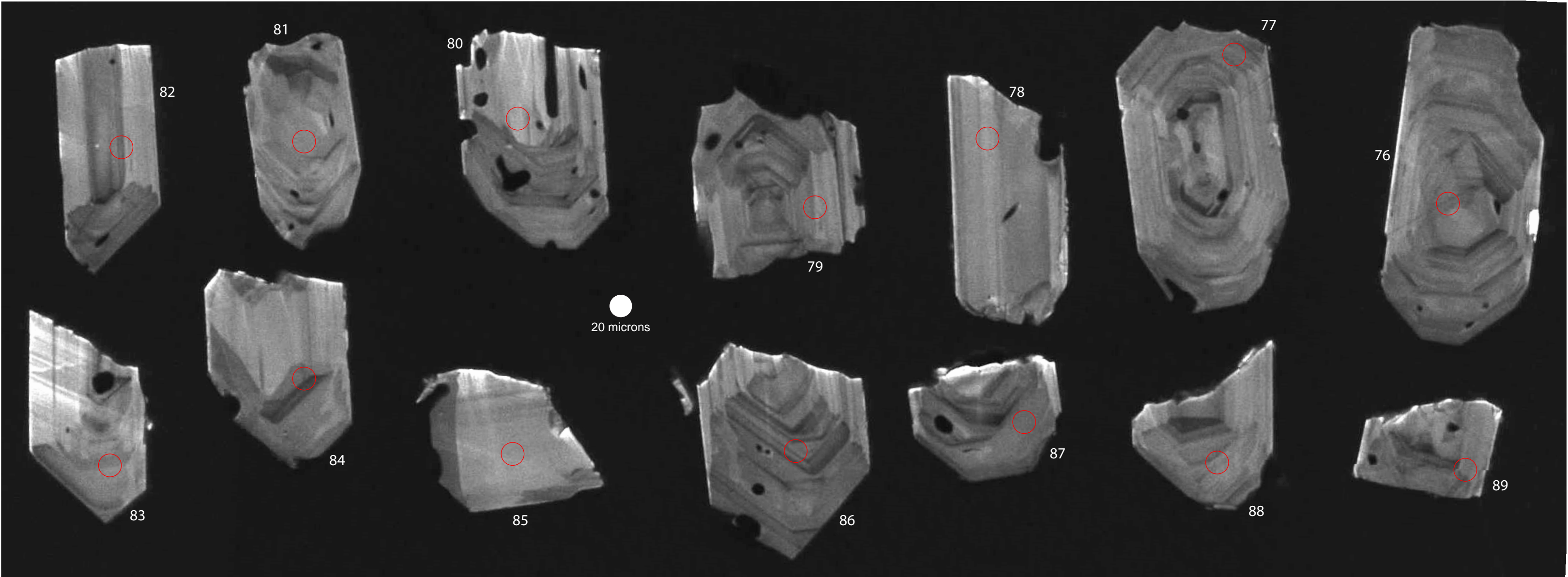
Bouvette

YGS

BSU1050-1053

19May23





22RC029-2

S

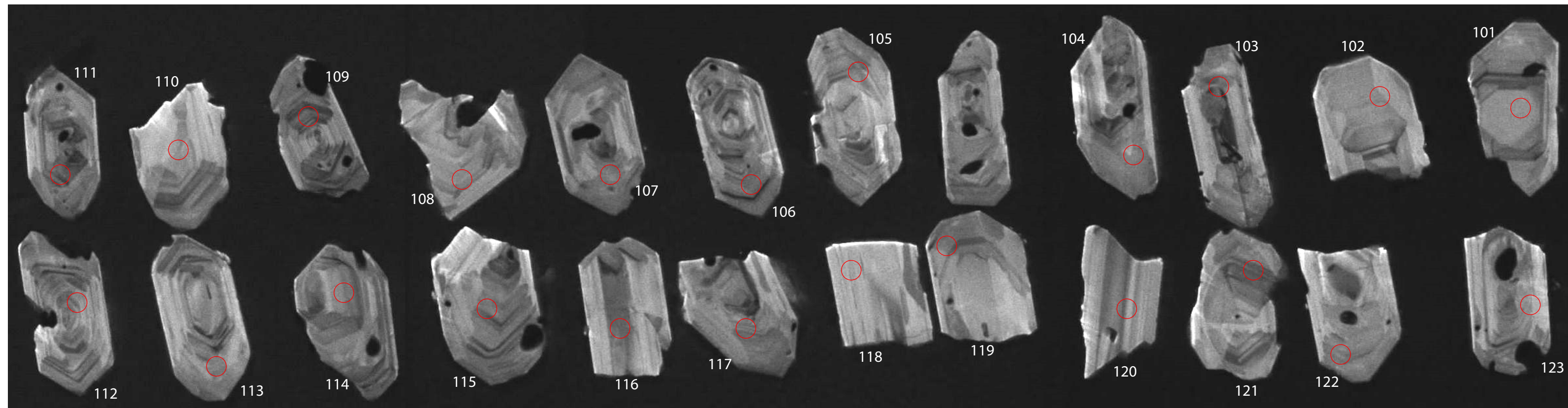
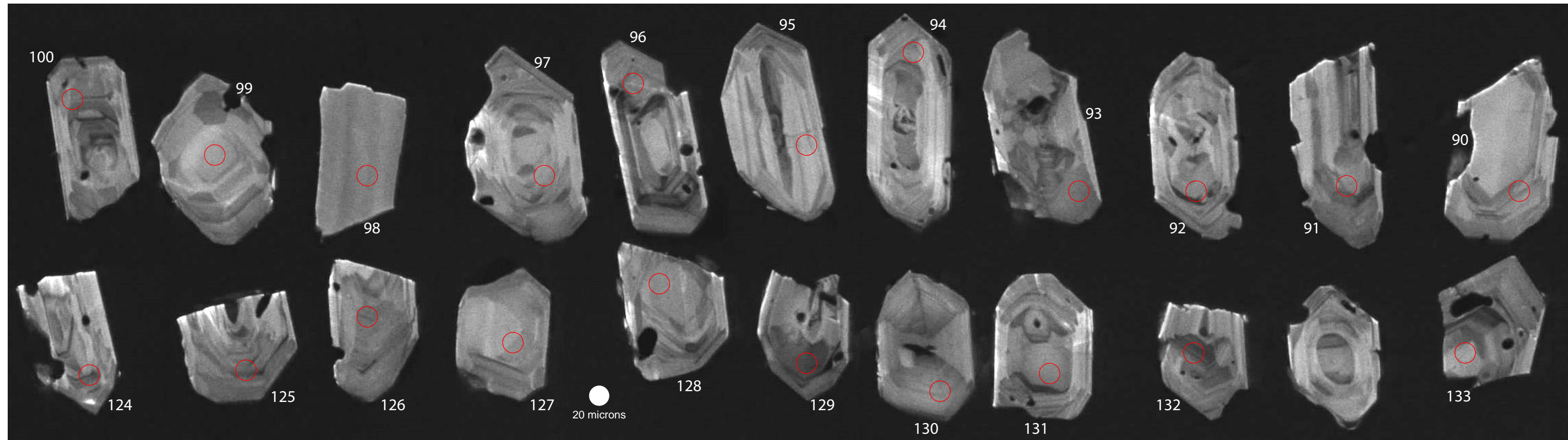
Crystal Lithic Tuff

Bouvette

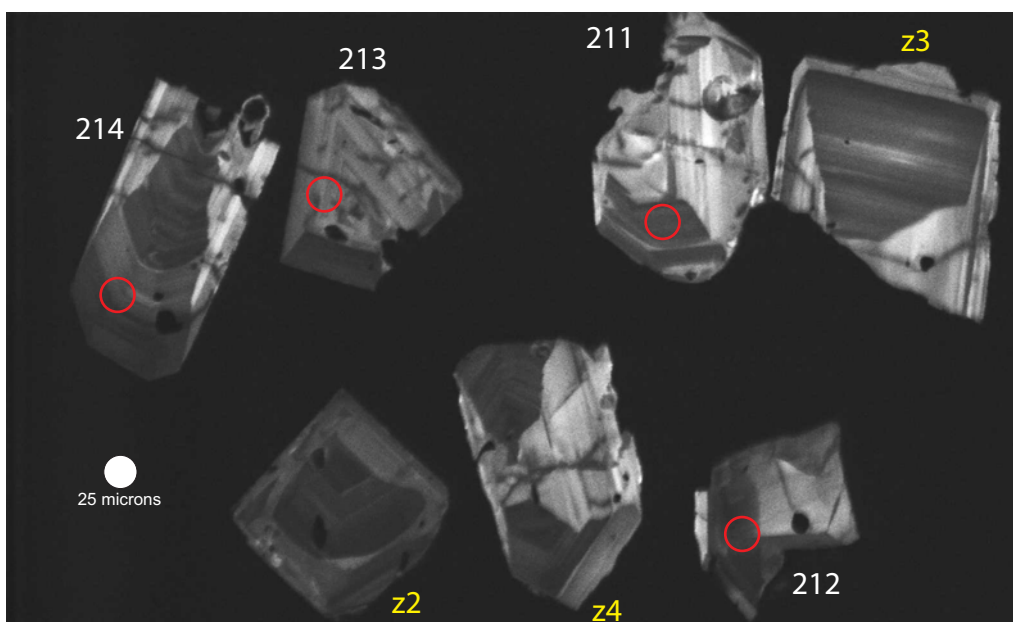
YGS

BSU1050-1053

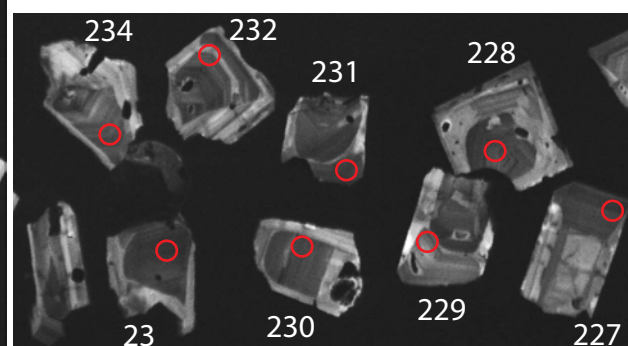
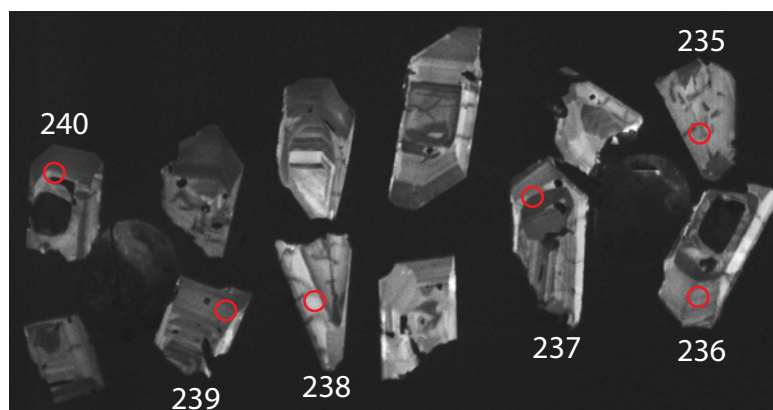
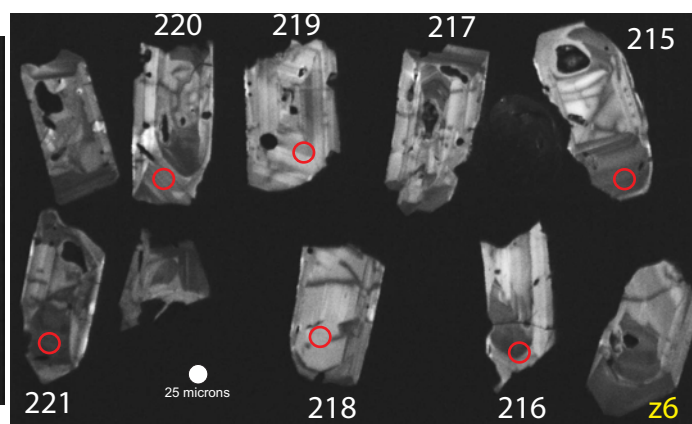
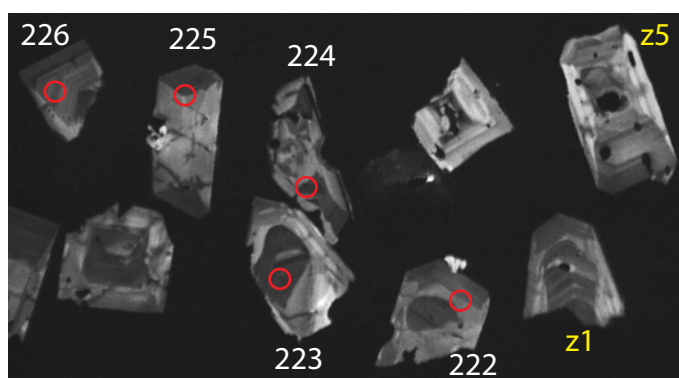
19May23



JB-1901-A L Mount



JB-1901-M Mount



JB-1901-A S Mount

